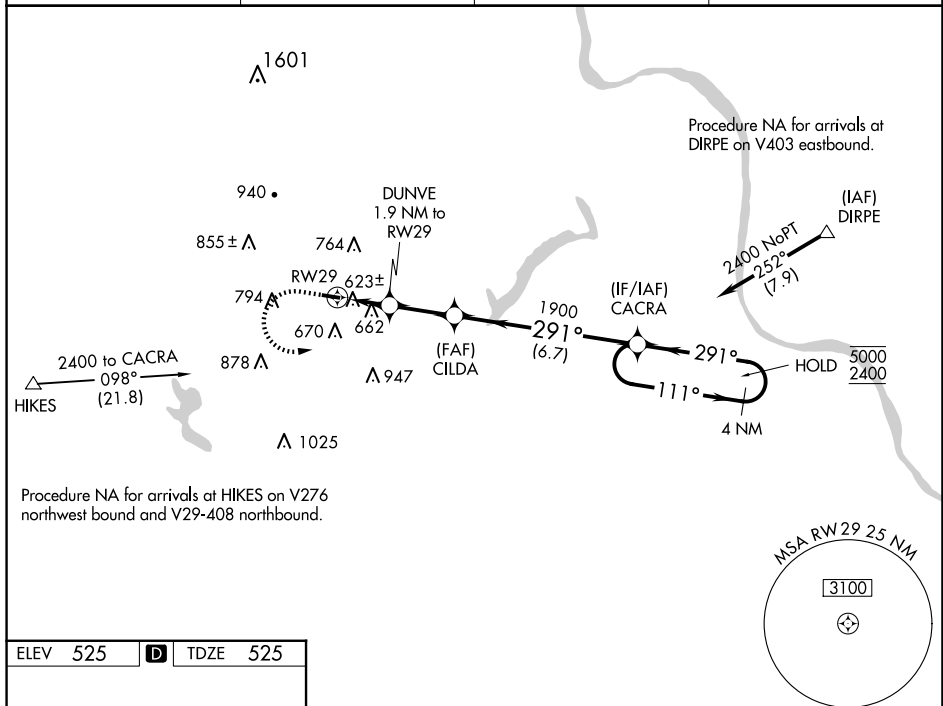


WAAS CH <b>61228</b> <b>W29A</b>	APP CRS <b>291°</b>	Rwy Idg TDZE Apt Elev	<b>3020</b> <b>525</b> <b>525</b>
--	------------------------	-----------------------------	---

RNAV (GPS) RWY 29  
QUAKERTOWN (UKT)

RNP APCH - GPS.			MISSED APPROACH: Climb to 1000, then climbing left turn to 2400 direct CACRA and hold.	
<div><div>▼</div><div>▲</div></div> <div>Circling Rwy 11 NA at night. Rwy 29 helicopter visibility reduction below ¾ SM NA.</div>				
AWOS-3 119.475	PHILADELPHIA APP CON 123.8 291.7		CLNC DEL 118.55	UNICOM 122.725 (CTAF) 0



1000  
2400  
CACRA  
Visual Segment - Obstacles.

4 NM  
Holding Pattern

11  
3210 X 75  
0.6% UP  
291°

DUNVE  
1.9 NM to RW29

CILDA  
1900

RW29  
1140

1.9 NM  
2.4 NM  
6.7 NM

CATEGORY	A	B	C	D
LP MDA	920-1	395 (400-1)	920-1½ 395 (400-1½)	NA
LNAV MDA	960-1	435 (500-1)	960-1¼ 435 (500-1¼)	NA
<b>C</b> CIRCLING	1040-1 515 (600-1)	1080-1 555 (600-1)	1220-2 695 (700-2)	NA

REIL Rwy 11 and 29  
MIRL Rwy 11-29