

WAAS CH 82345 W33A	APP CRS 335°	Rwy Ldg TDZE 1393 Apt Elev 1403
--	------------------------	---

RNAV (GPS) RWY 33

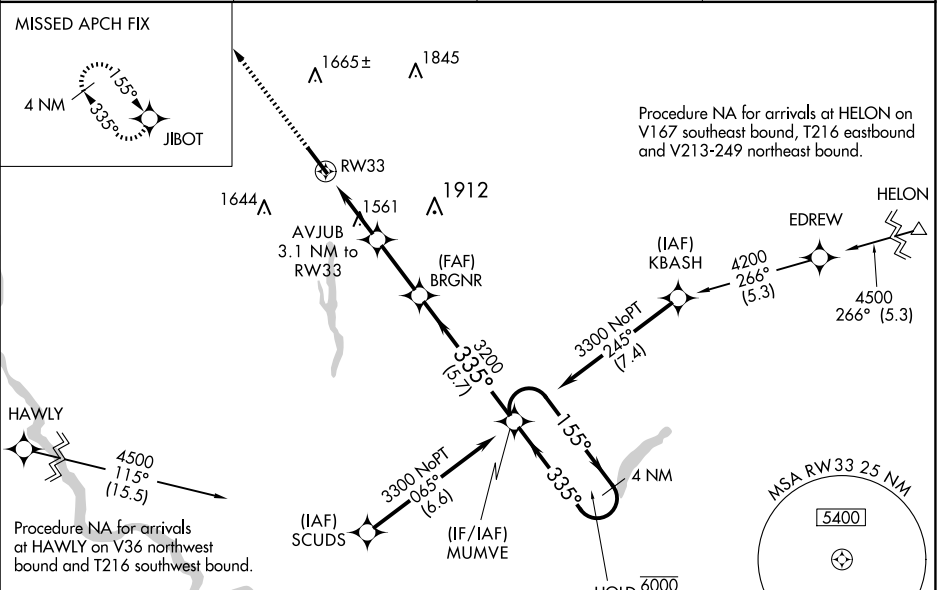
SULLIVAN COUNTY INTL (MSV)

RNP APCH - GPS.

For uncompensated Baro-VNAV systems, LNAV/VNAV NA below -17°C or above 54°C. Baro-VNAV and VDP NA when using New York Stewart Intl altimeter setting. When local altimeter setting not received, use New York Stewart Intl altimeter setting: increase LPV DA to 1848 feet and all visibilities ¾ SM; increase LNAV/VNAV DA to 1861 feet and all visibilities ¾ SM; increase all MDAs 220 feet and LNAV visibility Cat C and D ¾ SM, and Circling visibility Cat C ¾ SM and Cat D ½ SM.

MISSED APPROACH:
Climb to 4000 direct JIBOT and hold.

AWOS-3PT 124.725	NEW YORK APP CON 132.75 363.1	CLNC DEL 121.6	UNICOM 122.8 (CTAF) 0
----------------------------	---	--------------------------	---------------------------------



ELEV 1403	D	TDZE 1393
-----------	----------	-----------

