

WAAS CH 82729 W36A	APP CRS 357°	Rwy Idg 5199 TDZE 1182 Apt Elev 1182
--	------------------------	---

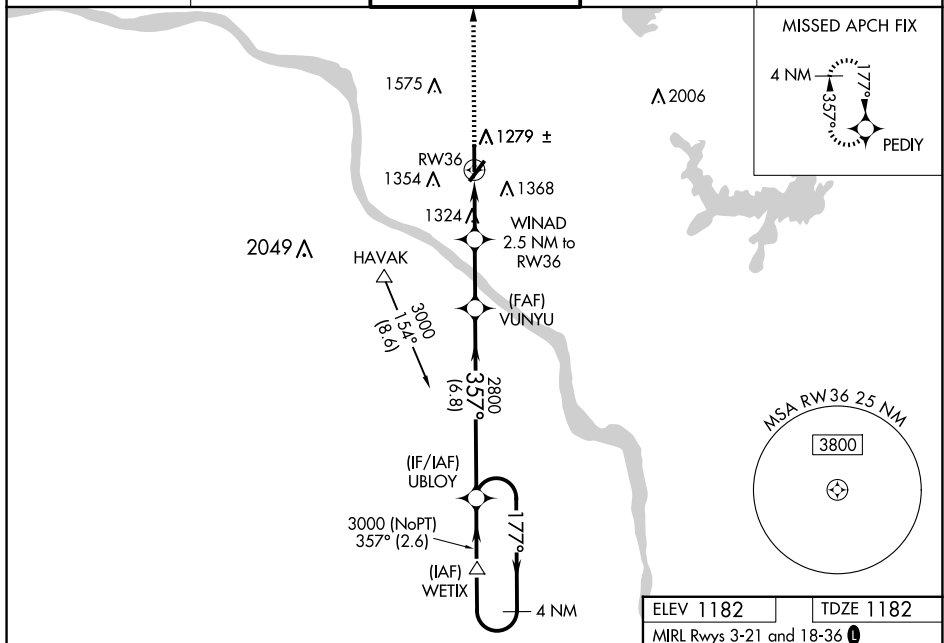
RNAV (GPS) RWY 36

UNIVERSITY OF OKLAHOMA WESTHEIMER (OUN)

▼ For uncompensated baro-VNAV systems, procedure NA below -17°C (2°F) or above 54°C (130°F).
▲ Baro-VNAV and VDP NA when using OKC Will Rogers Intl altimeter setting. DME/DME RNP-0.3 NA.
 When local altimeter setting not received, use OKC Will Rogers Intl altimeter setting and increase LPV DA to 1473 feet, LNAV/VNAV DA to 1541 feet; increase all MDA 60 feet, increase LPV visibility all Cats to 1 mile, LNAV/VNAV visibility all Cats to 1½ mile, and increase Circling Cat C/D visibility ¼ mile. Circling NA southeast of Rwy 3 and 21.

MISSED APPROACH:
Climb to 4000 direct
PEDIY and hold.

AWOS-3PT 119.55	OKE CITY APP CON 120.45 288,325	WESTHEIMER TOWER ★ 118.0 (CTAF) 0	GND CON 121.6	UNICOM 122.95
---------------------------	---	---	-------------------------	-------------------------



4 NM Holding Pattern
UBLOY
3000
←177°
357°→
357°
2800
VUNYU 2800
WINAD 2.5 NM to RW36
*1.3 NM to RW36
RW36
*2000
GP 3.00°
TCH 40
6.8 NM
2.5 NM
1.2 NM
1.3 NM

CATEGORY	A	B	C	D
LPV DA	1432-7/8	250 (300-7/8)		
LNAV/VNAV DA	1500-1 1/8	318 (400-1 1/8)		
LNAV MDA	1640-1 458 (500-1)	1640-1 3/8 458 (500-1 3/8)		
CIRCLING	1660-1 478 (500-1)	1940-2 1/4 758 (800-2 1/4)	1940-2 1/2 758 (800-2 1/2)	