

WAAS  
CH **77531**  
**W03A**

APP CRS  
**033°**

Rwy Idg **4748**  
TDZE **1177**  
Apt Elev **1182**

**RNAV (GPS) RWY 3**

UNIVERSITY OF OKLAHOMA WESTHEIMER (OUN)

▼

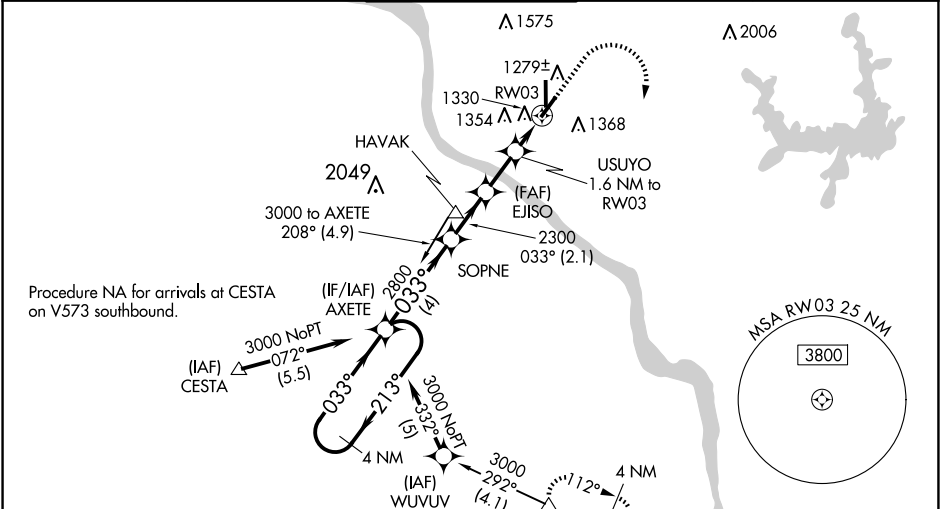
▲

Baro-VNAV NA when using Will Rogers World altimeter setting. For uncompensated Baro-VNAV systems, LNAV/VNAV NA below -17°C (2°F) or above 54°C (130°F). DME/DME RNP-0.3 NA. When local altimeter setting not received, use OKC Will Rogers Intl altimeter setting and increase LPV DA to 1501 feet, LNAV/VNAV DA to 1544 feet; increase all MDA 60 feet, increase LPV visibility to 7⁄8 mile all Cats, increase LNAV/VNAV visibility to 1 mile all Cats, and increase LNAV Cat C/D visibility to 1 1⁄8 mile. For inop MALS, increase LPV all Cats visibility to 1 mile, LNAV/VNAV Cat D visibility to 1 1⁄8 mile, LNAV Cat C/D visibility to 1 1⁄8 mile. For inop MALS when using OKC Will Rogers Intl altimeter setting, increase LPV all Cats visibility to 1 1⁄8 mile, LNAV/VNAV Cat D visibility to 1 1⁄4 mile, LNAV Cat D visibility to 1 1⁄8 mile. Circling NA southeast of Rwy 3 and 21.

MALS

MISSED APPROACH: Climb to 1700 then climbing right turn to 3100 direct WETIX and hold.

AWOS-3PT <b>119.55</b>	OKE CITY APP CON <b>120.45 288.325</b>	<b>WESTHEIMER TOWER*</b> <b>118.0 (CTAF) 0</b>	GND CON <b>121.6</b>	UNICOM <b>122.95</b>
---------------------------	-------------------------------------------	---------------------------------------------------	-------------------------	-------------------------



4 NM Holding Pattern

AXETE

SOPNE

EJISO

USUYO

WETIX

GP 3.00° TCH 40

3000

2800

2300

1700

3100

\*RNAV only

4 NM

2.1 NM

1.8 NM

1.6 NM

CATEGORY	A	B	C	D
LPV DA		1460-3⁄4	283 (300-3⁄4)	
LNAV/VNAV DA		1503-7⁄8	326 (400-7⁄8)	
LNAV MDA	1580-3⁄4	403 (400-3⁄4)	1580-1	403 (400-1)
CIRCLING	1660-1	478 (500-1)	1940-2 1⁄4 758 (800-2 1⁄4)	1940-2 1⁄2 758 (800-2 1⁄2)

ELEV 1182

TDZE 1177

MIRL Rwy 3-21 and 18-36 0

REIL Rwy 36 0