

LOC/DME I-PHY	APP CRS	Rwy Idg	4748
111.1	033°	TDZE	1177
Chan 48		Apt Elev	1182

LOC RWY 3

UNIVERSITY OF OKLAHOMA WESTHEIMER (OUN)

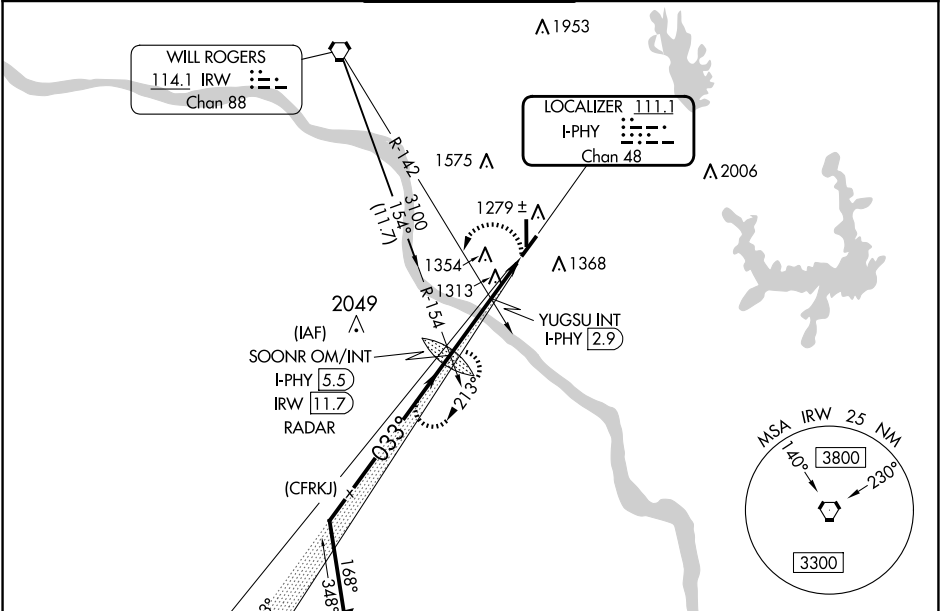
When local altimeter setting not received, use OKC Will Rogers Intl altimeter setting and increase all MDA 60 feet; increase S-3 Cat C/D visibility ¼ mile, Circling Cat C/D ¼ mile. For inop MALS increase S-3 Cat C/D visibility to 1¾ mile. For inop MALS when using OKC Will Rogers Intl altimeter setting, increase S-3 Cat C/D visibility to 1¾ mile. Circling NA southeast of Rwy 3 and 21.

MALS

MALS

MISSED APPROACH: Climbing left turn to 3100 on I-PHY SW course to SOONR OM/INT/I-PHY 5.5 DME/RADAR and hold, continue climb-in-hold to 3100.

AWOS-3PT	OKE CITY APP CON	WESTHEIMER TOWER*	GND CON	UNICOM
119.55	120.45 288.325	118.0 (CTAF) 0	121.6	122.95



ELEV 1182 TDZE 1177

MRL Rwy 3-21 and 18-36 0

REIL Rwy 36 0

81

5199 X 100

36

4748 X 100

21

033°

FAF to MAP 4.5 NM

Knots	60	90	120	150	180
Min:Sec	4:30	3:00	2:15	1:48	1:30

Remain within 10 NM

SOONR OM/INT I-PHY 5.5/RADAR

3100

213°

033°

VGSI and descent angles not coincident (VGSI Angle 3.00/TCH 40).

2700

1820

3.09° TCH 40

YUGSU INT I-PHY 2.9

I-PHY 2.1

I-PHY 1

2.6 NM

0.8 NM

1.1

3100

I-PHY SW crs

SOONR

CATEGORY	A	B	C	D
S-3	1580-¾	403 (400-¾)	1580-1	403 (400-1)
CIRCLING	1660-1	478 (500-1)	1940-2¼ 758 (800-2¼)	1940-2½ 758 (800-2½)