

LOC/DME I-BWM 111.95 Chan 56(Y)	APP CRS 177°	Rwy Idg 5199 TDZE 1182 Apt Elev 1182	ILS or LOC RWY 18
UNIVERSITY OF OKLAHOMA WESTHEIMER (OUN)			

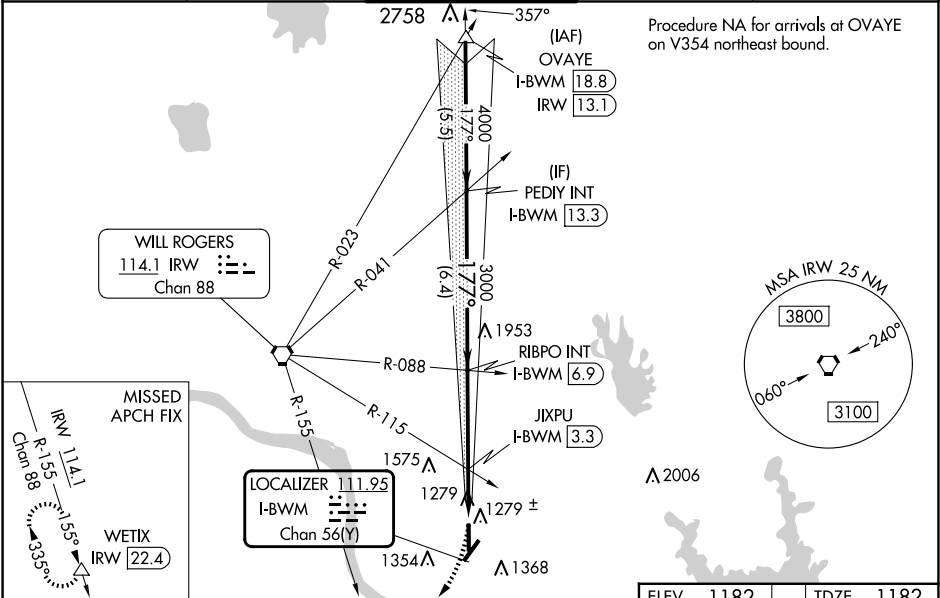
DME required.

▼ Circling NA southeast of Rwy 3-21. VDP NA when using OKC altimeter setting.
▲ When local altimeter setting not received, use OKC altimeter setting: increase S-ILS 18 DA to 1423 feet; increase all MDAs 60 feet, S-LOC 18 visibility Cats C and D ½ SM, and Circling visibility Cats C and D ¼ SM; increase JIXPU fix minimums S-LOC 18 visibility Cats C and D ½ SM, and Circling visibility Cats C and D ¼ SM.

MALSR

MISSED APPROACH: Climbing right turn to 3100 on heading 185° and IRW VORTAC R-155 to WETIX/IRW VORTAC 22.4 DME and hold.

AWOS-3PT 119.55	OKE CITY APP CON 120.45 288.325	WESTHEIMER TOWER★ 118.0 (CTAF) 0	GND CON 121.6	UNICOM 122.95
---------------------------	---	--	-------------------------	-------------------------



PEDY INT I-BWM 13.3		VGSi and ILS glidepath not coincident (VGSi Angle 3.00/TCH 55).		3100	IRW R-155	WETIX
4000		RIBPO INT I-BWM 6.9		3000	hdg 185°	△
GS 3.00° TCH 51		JIXPU INT I-BWM 3.3		3000	*LOC only.	
*1860 when using OKC altimeter setting.		I-BWM 2.3		1800		
6.4 NM		3.6 NM		1 NM	1 NM	
CATEGORY	A	B	C	D		
S-ILS 18	1382-½		200 (200-½)			
S-LOC 18	1800-½	618 (700-½)	1800-1¾	618 (700-1¾)		
◼ CIRCLING	1800-1	618 (700-1)	1940-2¼	758 (800-2¼)	1940-2½	758 (800-2½)
JIXPU FIX MINIMUMS (DUAL VOR RECEIVERS OR DME REQUIRED)						
S-LOC 18	1540-½	358 (400-½)	1540-5⁄8	358 (400-5⁄8)		
◼ CIRCLING	1660-1	478 (500-1)	1940-2¼	758 (800-2¼)	1940-2½	758 (800-2½)

ELEV 1182

TDZE 1182

177°

81

5199 X 100

36

5199 X 100

REIL Rwy 36

MIRL Rwy 3-21 and 18-36

FAF to MAP 5.6 NM

Knots 60 90 120 150 180

Min:Sec 5:36 3:44 2:48 2:14 1:52