

23334

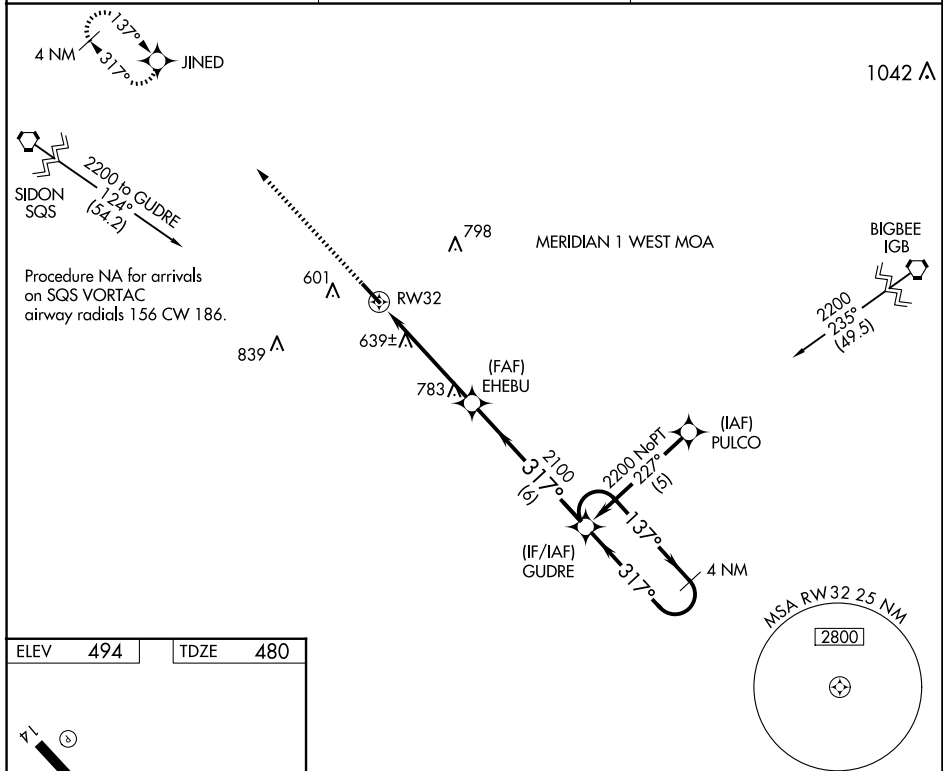
RNAV (GPS) RWY 32

KOSCIUSKO-ATTALA COUNTY (OSX)

T Rwy 32 helicopter visibility reduction below 1 SM NA. Procedure NA at night. Use Philadelphia altimeter setting; when not received, use Greenwood altimeter setting and **A** increase all MDAs 80 feet, increase visibility LNAV Cat C $\frac{3}{8}$ SM and Circling Cat C $\frac{3}{4}$ SM.

MISSED APPROACH: Climb to 2100 direct JINED and hold.

MPE AWOS-3P 118.725	MEMPHIS CENTER 132.75 263.0	CTAF 122.9 0
-------------------------------	---------------------------------------	------------------------



2100

JINED

VGSJ and descent angles not coincident (VGSJ Angle 3.50/TCH 49).

GUDRE

4 NM Holding Pattern

EHEBU

317°

137°

2200

RW32

3.04°

TCH 45

4.9 NM

6 NM

CATEGORY	A	B	C	D
LNNAV MDA	960-1	480 (500-1)	960-1 $\frac{3}{8}$ 480 (500-1 $\frac{3}{8}$)	NA
CIRCLING	1020-1	526 (600-1)	1160-1 $\frac{3}{4}$ 666 (700-1 $\frac{3}{4}$)	NA

KOSCIUSKO-ATTALA COUNTY (OSX)
RNAV (GPS) RWY 32

SC-4, 07 AUG 2025 to 04 SEP 2025