

APP CRS  
**137°**

Rwy ldg  
TDZE  
**494**

Apt Elev  
**494**

**RNAV (GPS) RWY 14**

KOSCIUSKO-ATTALA COUNTY (OSX)

RNP APCH - GPS.

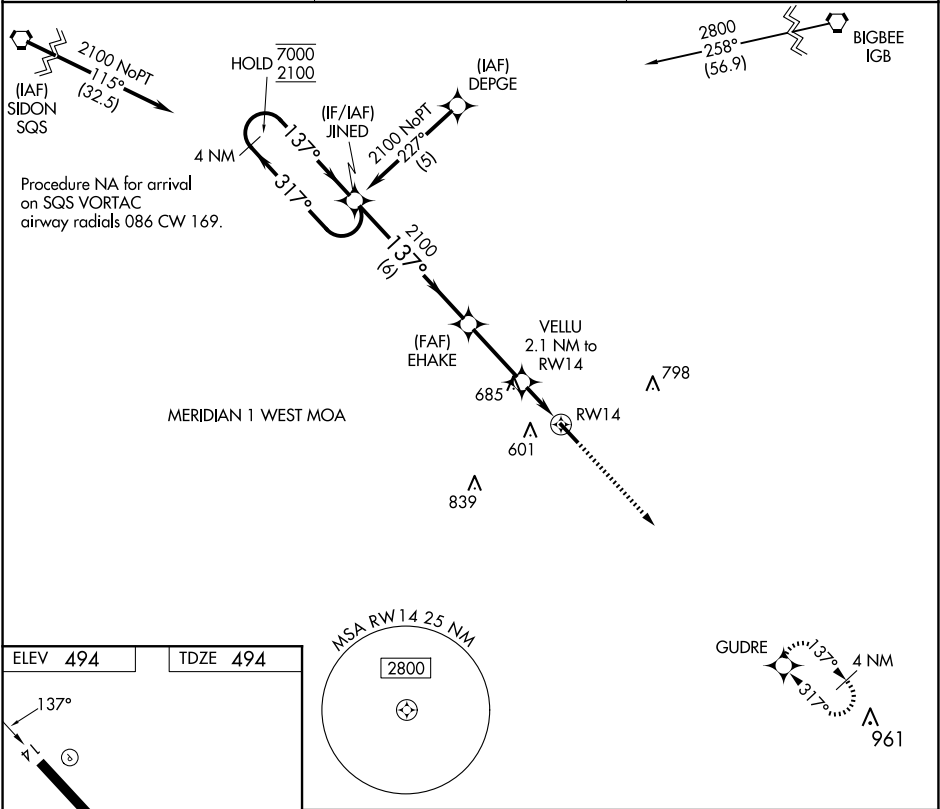
▼

NA

Rwy 14 helicopter visibility reduction below 1 SM NA. Procedure NA at night. Use Philadelphia altimeter setting; when not received, use Greenwood altimeter setting and increase all MDAs 80 feet, increase visibility LNAV Cat C ¼ SM and Circling Cat C ¾ SM.

MISSED APPROACH: Climb to 2200 direct GUDRE and hold.

MPE AWOS-3P <b>118.725</b>	MEMPHIS CENTER <b>132.75 263.0</b>	CTAF <b>122.9</b>
-------------------------------	---------------------------------------	----------------------



ELEV **494**

TDZE **494**

137°

5000 x 75

521

0.5% UP

MSA RW 14 25 NM

2800

Visual Segment - Obstacles.

2200

GUDRE

4 NM Holding Pattern

JINED

EHAKE

VELLU 2.1 NM to RW14

RW14

7000

2100

317°

137°

2100

1180

6 NM

2.8 NM

2.1 NM

CATEGORY	A	B	C	D
LNAV MDA	1020-1	526 (600-1)	1020-1½ 526 (600-1½)	NA
CIRCLING	1020-1	526 (600-1)	1160-1¾ 666 (700-1¾)	NA

MIRL Rwy 14-32