

|  |                        |   |
|--|------------------------|---|
| WAAS<br>CH <b>56504</b><br><b>W36A</b> | APP CRS<br><b>356°</b> | Rwy Idg <b>4403</b><br>TDZE <b>918</b><br>Apt Elev <b>918</b> |
|--|------------------------|---|

RNAV (GPS) RWY 36

FORT SCOTT MUNI (F'SK)

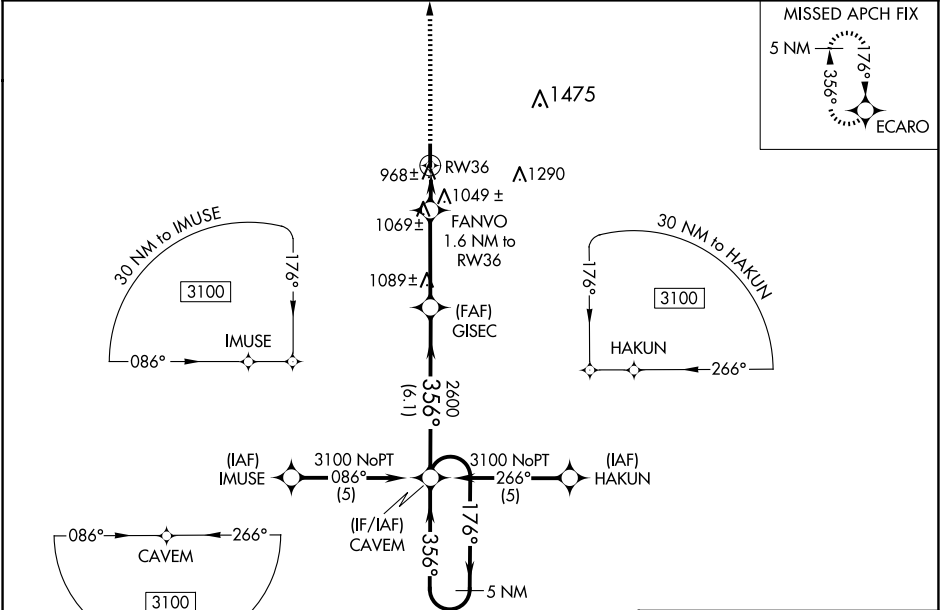
⚠

NA

When local altimeter setting not received, use Chanute altimeter setting and increase all DAs 93 feet and all MDAs 100 feet; increase Circling Cat C/D visibility ½ SM. Baro-VNAV NA when using Chanute altimeter setting. For uncompensated Baro-VNAV systems, LNAV/VNAV NA below -16°C (4°F) or above 47°C (116°F). DME/DME RNP-0.3 NA. Visibility reduction by helicopters NA.

MISSED APPROACH: Climb to 3000 direct ECARO and hold.

|                           |   |  |
|---------------------------|---|--|
| AWOS-3P<br><b>124.425</b> | KANSAS CITY CENTER<br><b>125.55 327.0</b> | UNICOM<br><b>122.8</b> (CTAF) <b>0</b> |
|---------------------------|---|--|



3000

↑

ECARO

✧

\*LNAV only

FANVO 1.6 NM to RW36

RW36

1460\*

3.5 NM

6.1 NM

CAVEM

GISEC

356°

176°

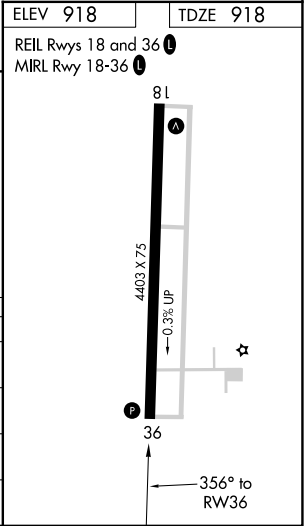
3100

5 NM Holding Pattern

GP 3.00°

TCH 39

| CATEGORY      | A                  | B                    | C                  | D                    |
|---------------|--------------------|----------------------|--------------------|----------------------|
| LPV DA        | 1189-1             | 271 (300-1)          |                    |                      |
| LNAV/ VNAV DA | 1240-1¼            | 322 (400-1¼)         |                    |                      |
| LNAV MDA      | 1320-1 402 (500-1) | 1320-1¼ 402 (500-1¼) |                    |                      |
| CIRCLING      | 1320-1 402 (500-1) | 1380-1 462 (500-1)   | 1640-2 722 (800-2) | 1640-2¼ 722 (800-2¼) |



NC-2, 07 AUG 2025 to 04 SEP 2025

NC-2, 07 AUG 2025 to 04 SEP 2025