

WAAS CH 50404 W18A	APP CRS 176°	Rwy Idg TDZE Apt Elev	4403 914 918
--	------------------------	-----------------------------	---

RNAV (GPS) RWY 18

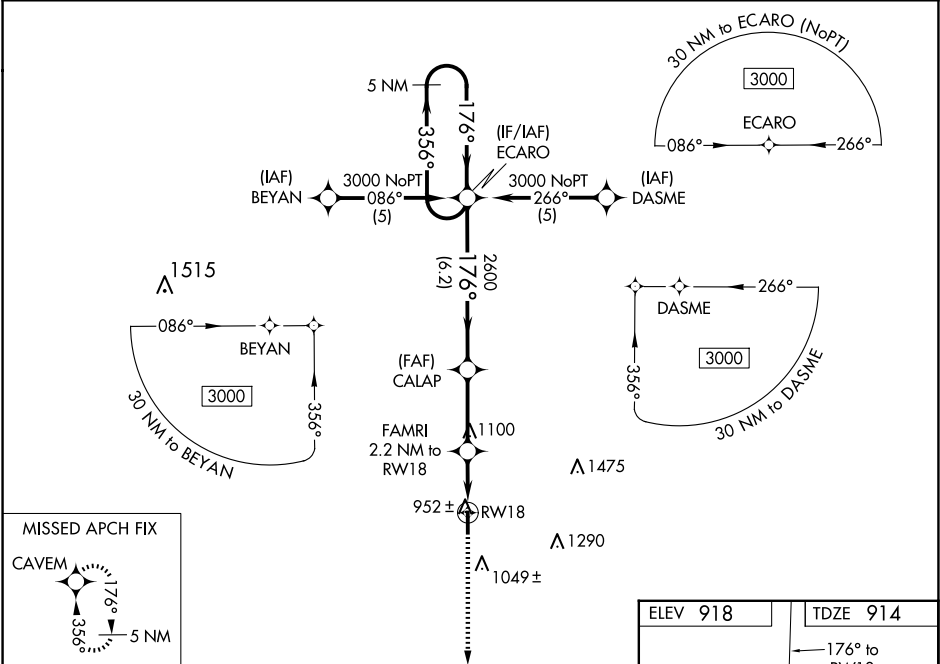
FORT SCOTT MUNI (F'SK)

NA

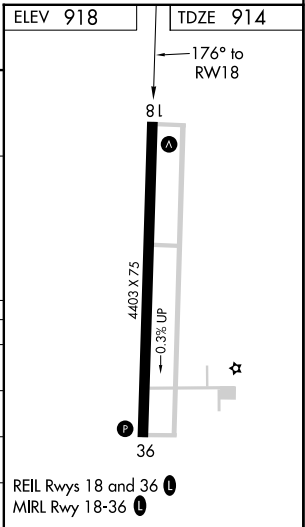
When local altimeter setting not received, use Chanute altimeter setting and increase all DAs 93 feet and all MDAs 100 feet; increase Circling Cat C/D visibility ½ SM. Baro-VNAV NA when using Chanute altimeter setting. For uncompensated Baro-VNAV systems, LNAV/VNAV NA below -16°C (4°F) or above 47°C (116°F). DME/DME RNP-0.3 NA. Visibility reduction by helicopters NA.

MISSED APPROACH: Climb to 3100 direct CAVEM and hold.

AWOS-3P 124.425	KANSAS CITY CENTER 125.55 327.0	UNICOM 122.8 (CTAF) 1
---------------------------	---	---------------------------------



5 NM Holding Pattern		ECARO	3100	CAVEM
3000		←356°	176°→	
GP 3.00° TCH 39°		176°	2600	
		6.2 NM	2.9 NM	2.2 NM
CATEGORY	A	B	C	D
LPV DA	1164-1 250 (300-1)			
LNAV/ VNAV DA	1212-1 298 (300-1)			
LNAV MDA	1220-1 306 (400-1)			
CIRCLING	1280-1 362 (400-1)	1380-1 462 (500-1)	1640-2 722 (800-2)	1640-2¼ 722 (800-2¼)



NC-2, 07 AUG 2025 to 04 SEP 2025

NC-2, 07 AUG 2025 to 04 SEP 2025