

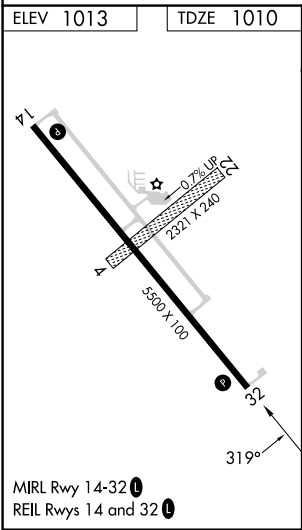
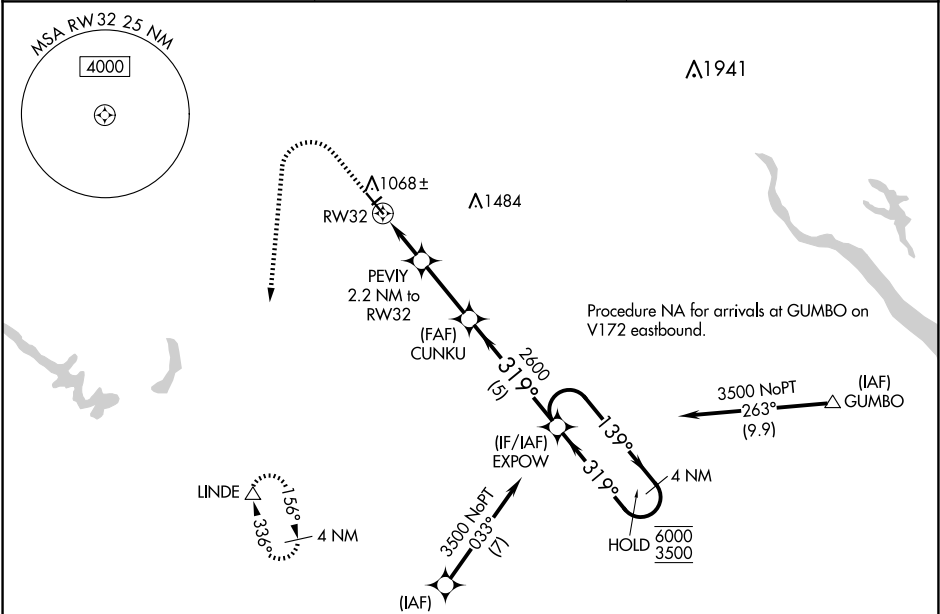
WAAS CH 53345 W32A	APP CRS 319°	Rwy Idg TDZE Apt Elev	5500 1010 1013
--	------------------------	-----------------------------	---

RNAV (GPS) RWY 32

PERRY MUNI (PRO)

RNP APCH - GPS.	MISSED APPROACH: Climb to 1500 then climbing left turn to 3500 direct LINDE and hold.
<div><div></div><div></div></div> Circling NA to Rwy's 4 and 22. For uncompensated Baro-VNAV systems, LNAV/VNAV NA below -17°C or above 54°C.	

AWOS-3 118.0	DES MOINES APP CON 123.9 360.7	UNICOM 122.8 (CTAF) 0
------------------------	--	---------------------------------



1500 ↑	3500 ↖	LINDE △	VGSI and RNAV glidepath not coincident (VGSI Angle 3.00/TCH 33).			
		PEVIY 2.2 NM to RW32	CUNKU 2600	EXPOW	4 NM Holding Pattern	
		1.2 NM to RW32	1740	319°	139° → 6000 ← 319° 3500	GP 3.00° TCH 40
		1.2	1 NM	2.7 NM	5 NM	
CATEGORY		A	B	C	D	
LPV	DA	1260-¾ 250 (300-¾)				
LNAV/ LNAV	DA	1310-⅞ 300 (300-⅞)				
LNAV	MDA	1380-1 370 (400-1)				
CIRCLING		1440-1 427 (500-1)	1480-1 467 (500-1)	1600-1½ 587 (600-1½)	1840-2¾ 827 (900-2¾)	