

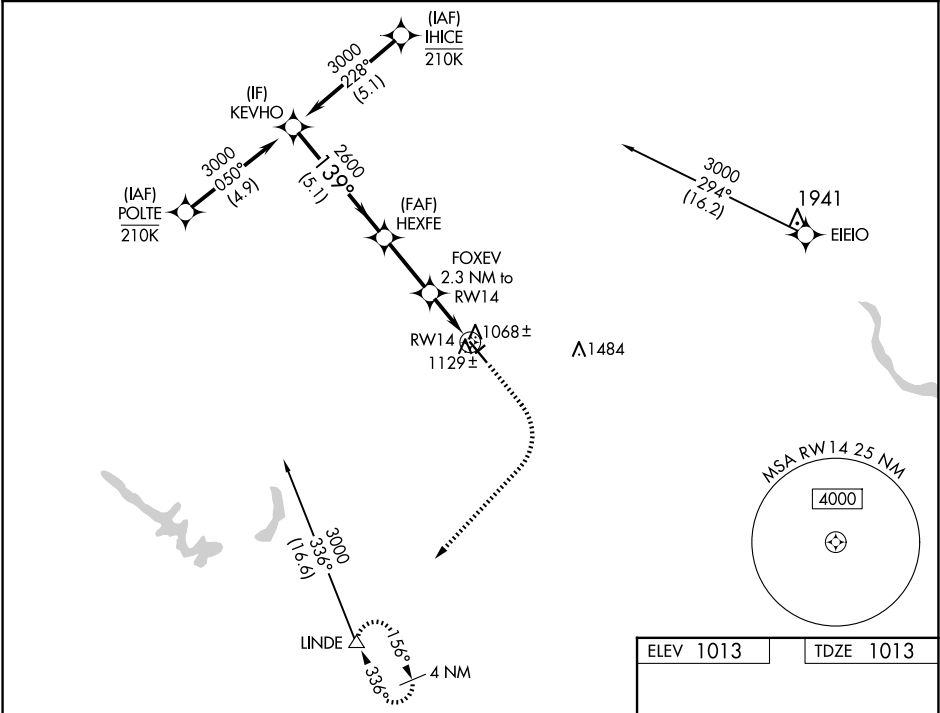
WAAS CH 99345 W14A	APP CRS 139°	Rwy Idg TDZE Apt Elev 5500 1013 1013
----------------------------------------	------------------------	--------------------------------------------------------------------------

RNAV (GPS) RWY 14

PERRY MUNI (PRO)

RNP APCH - GPS.	MISSED APPROACH: Climb to 1500 then climbing right turn to 3500 direct LINDE and hold.
<div><div></div><div>Circling NA to Rwys 4 and 22. For uncompensated Baro-VNAV systems, LNAV/VNAV NA below -17°C or above 54°C.</div></div>	

AWOS-3 118.0	DES MOINES APP CON 123.9 360.7	UNICOM 122.8 (CTAF) 0
------------------------	------------------------------------------	---------------------------------



VGSI and RNAV glidepath not coincident (VGSI Angle 3.00/TCH 34).					1500	3500	LINDE
<div><div>KEVHO</div><div>3000</div><div>GP 3.00° TCH 40</div><div>HEXFE</div><div>2600</div><div>FOXEV</div><div>2.3 NM to RW14</div><div>1.1 NM to RW14</div><div>RW14</div><div>1780</div><div>5.1 NM</div><div>2.6 NM</div><div>1.2 NM</div><div>1.1 NM</div></div>					<div><div>139°</div><div>5500 X 100</div><div>2321 X 240</div><div>32</div></div>		
CATEGORY	A	B	C	D			
LPV DA	1263-¾ 250 (300-¾)						
LNAV/VNAV DA	1310-⅞ 297 (300-⅞)						
LNAV MDA	1380-1 367 (400-1)						
CIRCLING	1440-1 427 (500-1)	1480-1 467 (500-1)	1600-1½ 587 (600-1½)	1840-2¾ 827 (900-2¾)	MIRL Rwy 14-32 0 REIL Rwy 14 and 32 0		