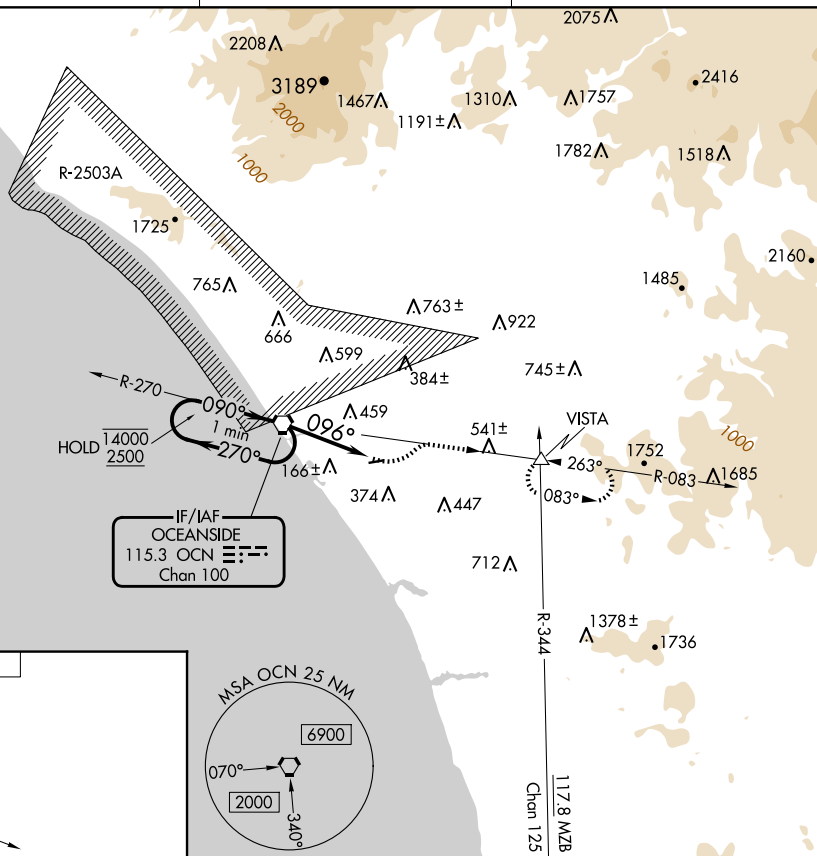


VOR-A
BOB MAXWELL MEML AIRFIELD (OKB)

MISSED APPROACH: Climbing left turn to 5600 on heading 030° and on OCN VORTAC R-083 to VISTA INT and hold, continue climb-in-hold to 5600.

UNICOM
.725 (CTAF) **L**

<p>One Minute Holding Pattern</p>		<p>5600 hdg 030°</p>	<p>OCN R-083</p>	<p>VISTA △</p>
CATEGORY	A	B	C	D
CIRCLING	<p>980-1¼ 952 (1000-1¼)</p>	<p>980-1½ 952 (1000-1½)</p>	NA	

SW-3, 07 AUG 2025 to 04 SEP 2025