

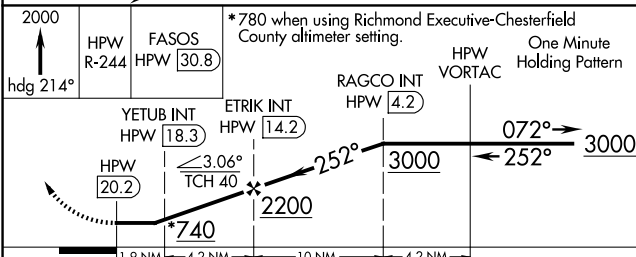
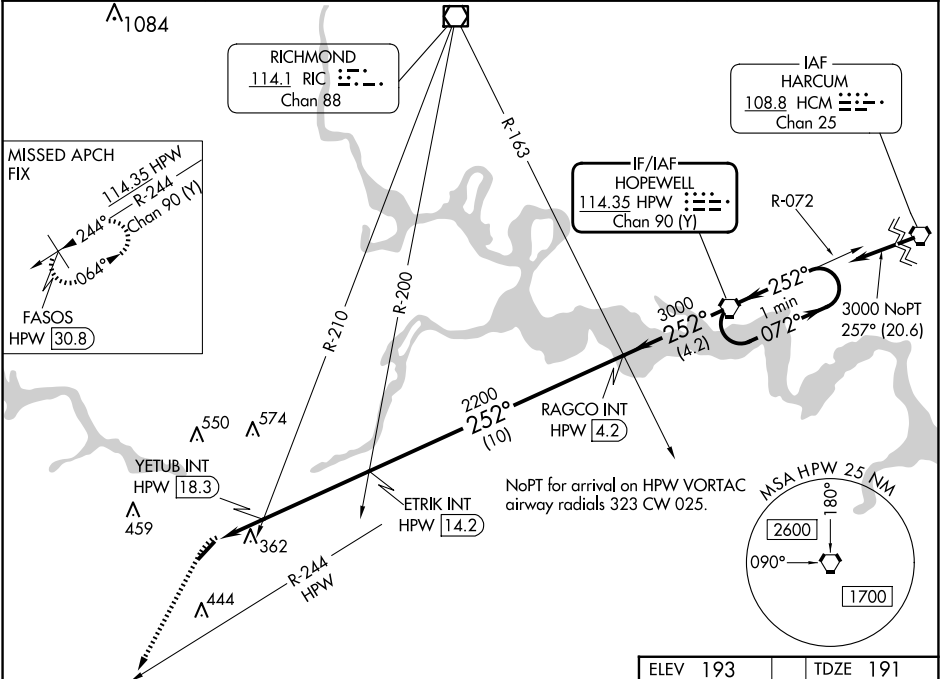
VORTAC HPW	APP CRS	Rwy Idg	5002
114.35	252°	TDZE	191
Chan 90 (Y)		Apt Elev	193

VOR RWY 23
TRI CITIES EXEC/DINWIDDIE COUNTY (PTB)

⚠ When local altimeter setting not received, use Richmond Exec/Chesterfield County altimeter setting and increase all MDA 40 feet; increase S-23 Cat C and Circling Cat C visibility 1/8 mile and YETUB fix minimums S-23 Cat C visibility 1/8 mile and Circling Cat C visibility 1/4 mile. DME required.

MISSED APPROACH: Climb to 2000 on heading 214° and HPW R-244 to FASOS/HPW 30.8 DME and hold.

AWOS-3 133.325	POTOMAC APP CON 126.75 307.2	GCO 135.075	UNICOM 122.7 (CTAF) 0
-------------------	---------------------------------	----------------	--------------------------



CATEGORY	A	B	C	D
S-23	740-1 549 (600-1)	740-1 549 (600-1 1/8)	740-1 549 (600-1 1/8)	NA
CIRCLING	740-1 547 (600-1)	760-1 567 (600-1 1/8)	760-1 567 (600-1 1/8)	NA
YETUB FIX MINIMUMS (DUAL VOR RECEIVERS OR DME REQUIRED)				
S-23	620-1 429 (500-1)	620-1 429 (500-1 1/4)	620-1 429 (500-1 1/4)	NA
CIRCLING	680-1 487 (500-1)	760-1 567 (600-1 1/2)	760-1 567 (600-1 1/2)	NA

ELEV 193 TDZE 191

One Minute Holding Pattern

MIRL Rwy 5-23 0
REIL Rwy 23 0

FAF to MAP 6.1 NM

Knots	60	90	120	150	180
Min:Sec	6:06	4:04	3:03	2:26	2:02

NE-3, 07 AUG 2025 to 04 SEP 2025

NE-3, 07 AUG 2025 to 04 SEP 2025