

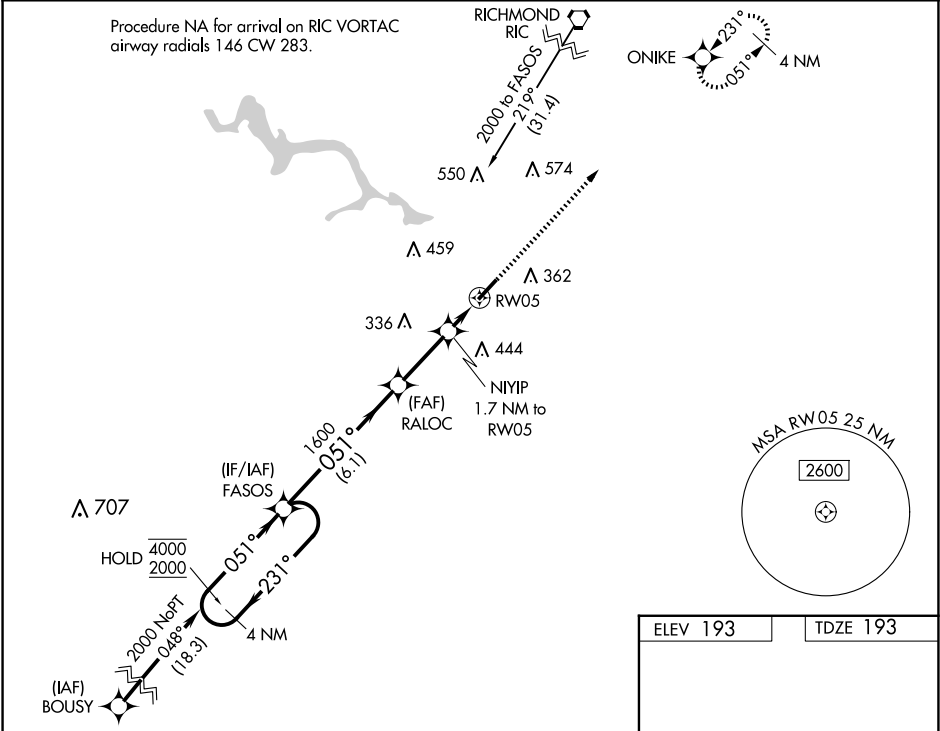
WAAS CH <b>70705</b> <b>W05A</b>	APP CRS <b>051°</b>	Rwy Idg TDZE <b>193</b> Apt Elev <b>193</b>
--	------------------------	---

RNAV (GPS) RWY 5

TRI CITIES EXEC/DINWIDDIE COUNTY (PTB)

RNP APCH - GPS.	ODALS	MISSED APPROACH: Climb to 2000 direct ONIKE and hold.
▽ ▲ Inop table does not apply to LPV all Cats, LNAV/VNAV all Cats and LNAV Cat A and B. Rwy 5 helicopter visibility reduction below ¾ SM NA. For uncompensated Baro-VNAV systems, LNAV/VNAV NA below -15°C or above 54°C.		

AWOS-3 <b>133.325</b>	POTOMAC APP CON <b>126.75 307.2</b>	GCO <b>135.075</b>	UNICOM <b>122.7 (CTAF) 0</b>
--------------------------	--	-----------------------	---------------------------------



4 NM Holding Pattern		FASOS	RALOC	NIYIP 1.7 NM to RWY 05	2000	ONIKE
4000	← 231°	051°	1600	1.1 NM to RWY 05	↑	✦
2000	→ 051°	051°	760	1.1 NM to RWY 05		
GP 3.00		1600				
TCH 42		6.1 NM	2.6 NM	0.5 NM		
				1.1 NM		
CATEGORY	A	B	C	D		
LPV DA	511-1	318 (400-1)		NA		
LNAV/VNAV DA	597-1	404 (500-1)		NA		
LNAV MDA	600-1	407 (500-1)		NA		
CIRCLING	680-1	487 (500-1)	760-1½ 567 (600-1½)	NA		

