

WAAS CH <b>86706</b> <b>W23A</b>	APP CRS <b>231°</b>	Rwy Idg TDZE Apt Elev	<b>5002</b> <b>191</b> <b>193</b>
--	------------------------	-----------------------------	---

# RNAV (GPS) RWY 23

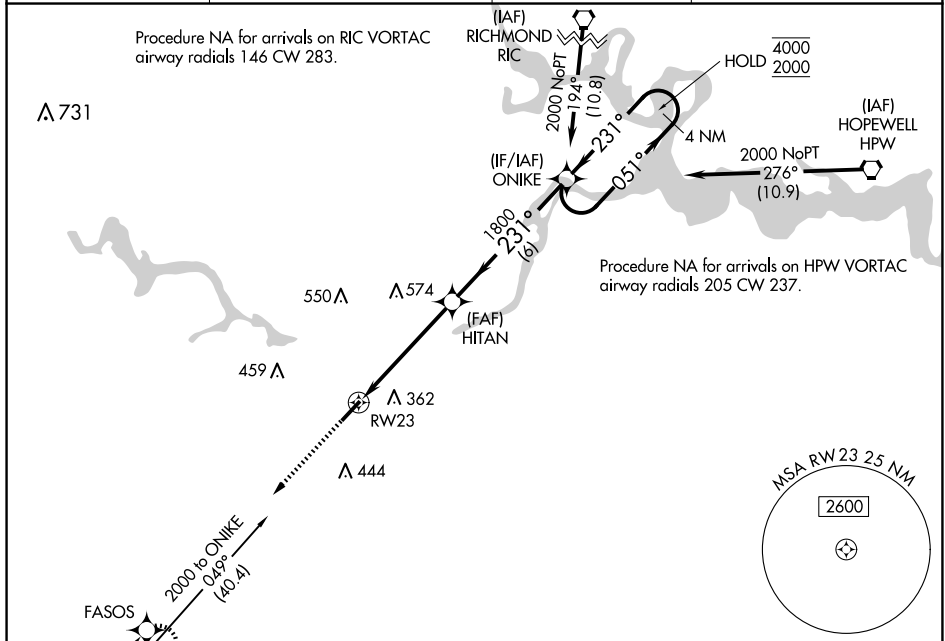
## TRI CITIES EXEC/DINWIDDIE COUNTY (PTB)

RNP APCH - GPS.

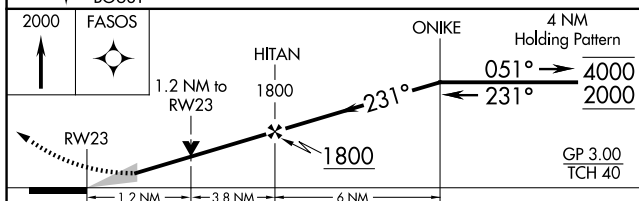
**T**  
**A** For uncompensated Baro-VNAV systems, LNAV/VNAV NA below -15°C or above 54°C.

**MISSED APPROACH:** Climb to 2000 direct FASOS and hold.

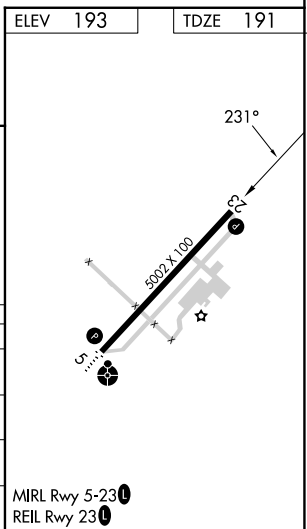
AWOS-3 <b>133.325</b>	POTOMAC APP CON <b>126.75 307.2</b>	GCO <b>135.075</b>	UNICOM <b>122.7 (CTAF) ①</b>
--------------------------	--	-----------------------	---------------------------------



ELEV 193		TDZE 191
----------	--	----------



CATEGORY	A	B	C	D
LPV DA	441- <sup>3</sup> / <sub>4</sub>	250 (300- <sup>3</sup> / <sub>4</sub> )		NA
LNAV/ VNAV DA	490- <sup>7</sup> / <sub>8</sub>	299 (300- <sup>7</sup> / <sub>8</sub> )		NA
LNAV MDA	600-1	409 (500- 1)	600-1 <sup>1</sup> / <sub>8</sub> 409 (500-1 <sup>1</sup> / <sub>8</sub> )	NA
CIRCLING	680-1	487 (500- 1)	760-1 <sup>1</sup> / <sub>2</sub> 567 (600-1 <sup>1</sup> / <sub>2</sub> )	NA



## RNAV (GPS) RWY 23