

LOC/DME I-JLS	APP CRS	Rwy Idg	5002
110.3	051°	TDZE	193
		Apt Elev	193

LOC RWY 5

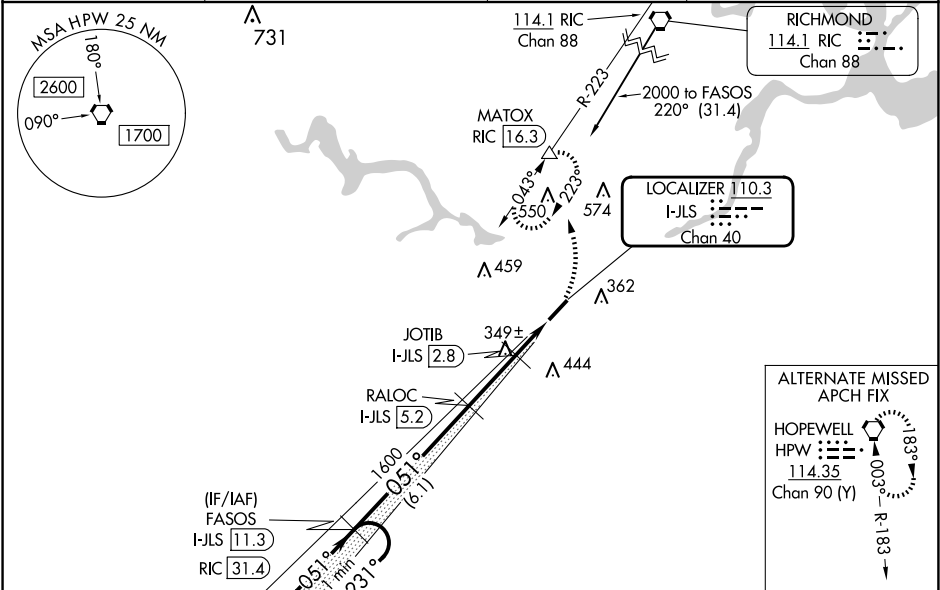
TRI CITIES EXEC/DINWIDDIE COUNTY (PTB)

DME required. Helicopter visibility reduction below ¾ SM NA. VDP NA when using Richmond Exec/Chesterfield County altimeter setting. When local altimeter setting not received, use Richmond Exec/Chesterfield County altimeter setting and increase all MDA 40 feet; increase S-LOC 5 Cat C visibility ¼ mile and Circling Cat C visibility ¼ mile. For inop ODALS, increase S-LOC 5 Cat C visibility to 1½ mile. Inop table does not apply to S-LOC 5 Cat A and B. Inop table does not apply to S-LOC Cat A and B when using Richmond Exec/Chesterfield County altimeter setting.

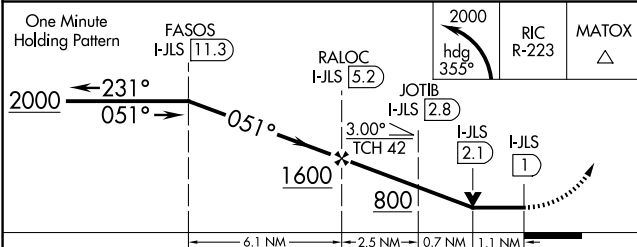
ODALS

MISSED APPROACH:
Climbing left turn to 2000 on heading 355° and on RIC VORTAC R-223 to MATOX/RIC 16.3 DME and hold.

AWOS-3	POTOMAC APP CON	GCO	UNICOM
133.325	126.75 307.2	135.075	122.7 (CTAF) 0



DME REQUIRED



CATEGORY	A	B	C	D
S-5	600-1	407 (500-1)		NA
CIRCLING	680-1	487 (500-1)	760-1½ 567 (600-1½)	NA

ELEV 193

TDZE 193

MIRL Rwy 5-23

REIL Rwy 23

FAF to MAP 4.3 NM

Knots	60	90	120	150	180
Min:Sec	4:18	2:52	2:09	1:43	1:26