

VOR/DME BSV 114.05 Chan 87 (Y)	APP CRS 296°	Rwy Idg 4972 TDZE 1134 Apt Elev 1136
--	------------------------	---

VOR RWY 28

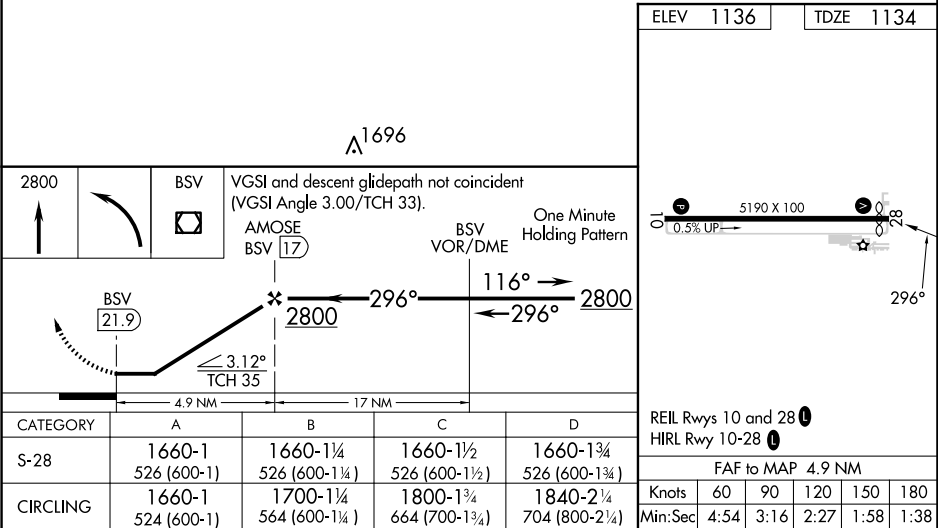
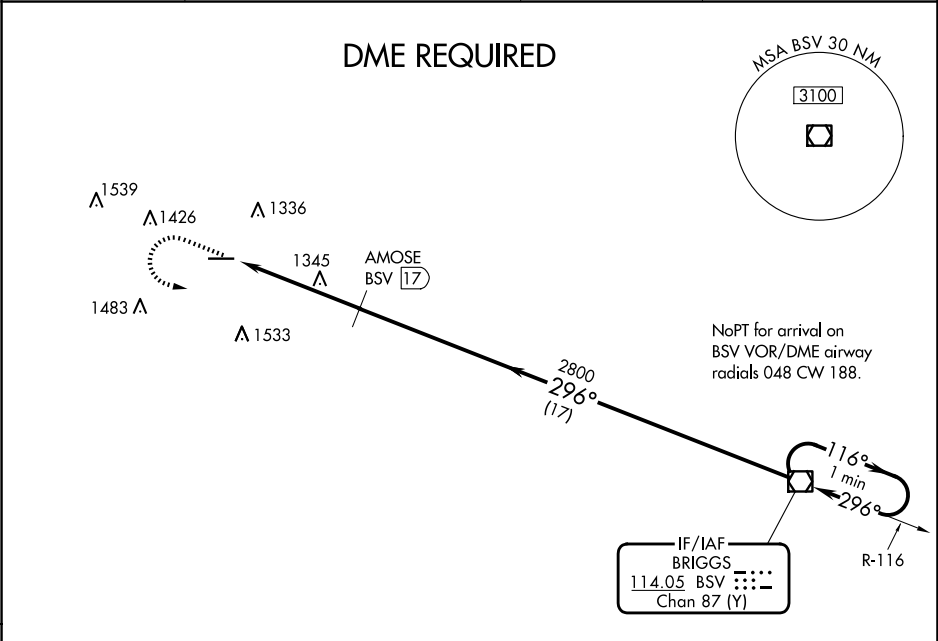
WAYNE COUNTY (BJJ)

⚠

DME required. Helicopter visibility reduction below ¾ SM NA.
When local altimeter setting not received, use Akron-Canton Rgnl altimeter setting and increase all MDA 60 feet and visibility Circling Cat C/D ¼ SM.

MISSED APPROACH: Climb to 2800 then left turn direct BSV VOR/DME and hold.

ASOS 118.075	CLEVELAND APP CON ★ 125.5 371.875	CLNC DEL 121.75	UNICOM 122.975 (CTAF) 0
------------------------	---	---------------------------	--



EC-2, 07 AUG 2025 to 04 SEP 2025

EC-2, 07 AUG 2025 to 04 SEP 2025