

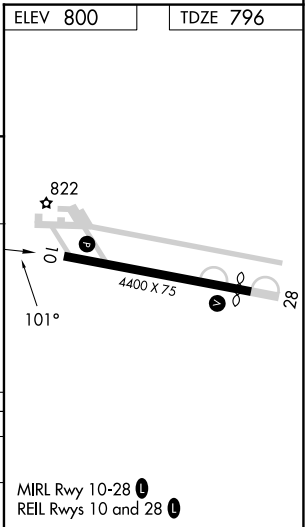
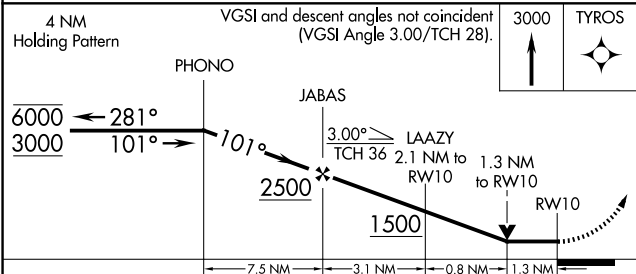
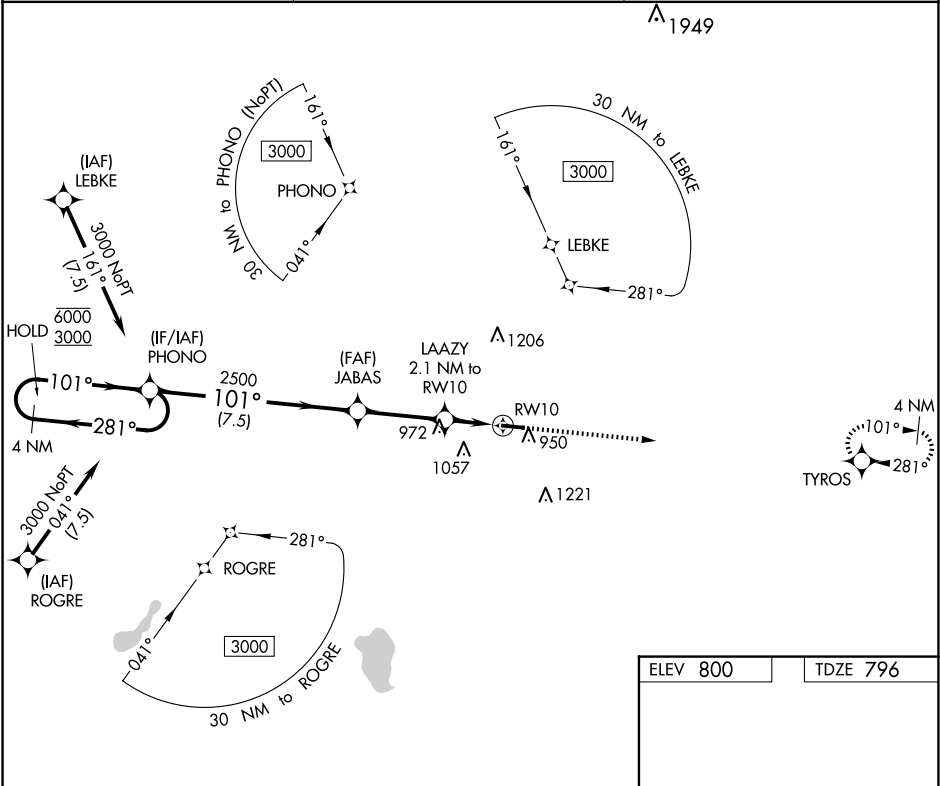
APP CRS 101°	Rwy Idg 4400 TDZE 796 Apt Elev 800
------------------------	---

RNAV (GPS) RWY 10

PLYMOUTH MUNI (C65)

RNP APCH.	MISSED APPROACH: Climb to 3000 direct TYROS and hold.
Circling to Rwy 28 NA at night. Rwy 10 helicopter visibility reduction below ¾ SM NA.	

AWOS-3 133.025	SOUTH BEND APP CON ★ 132.05 257.8	UNICOM 122.975 (CTAF) 0
--------------------------	---	-----------------------------------



CATEGORY	A	B	C	D
LNAV MDA	1240-1	444 (500-1)	1240-1 3/8 444 (500-1 3/8)	NA
CIRCLING	1280-1 480 (500-1)	1360-1 560 (600-1)	1540-2 740 (800-2)	NA

EC-2, 07 AUG 2025 to 04 SEP 2025

EC-2, 07 AUG 2025 to 04 SEP 2025