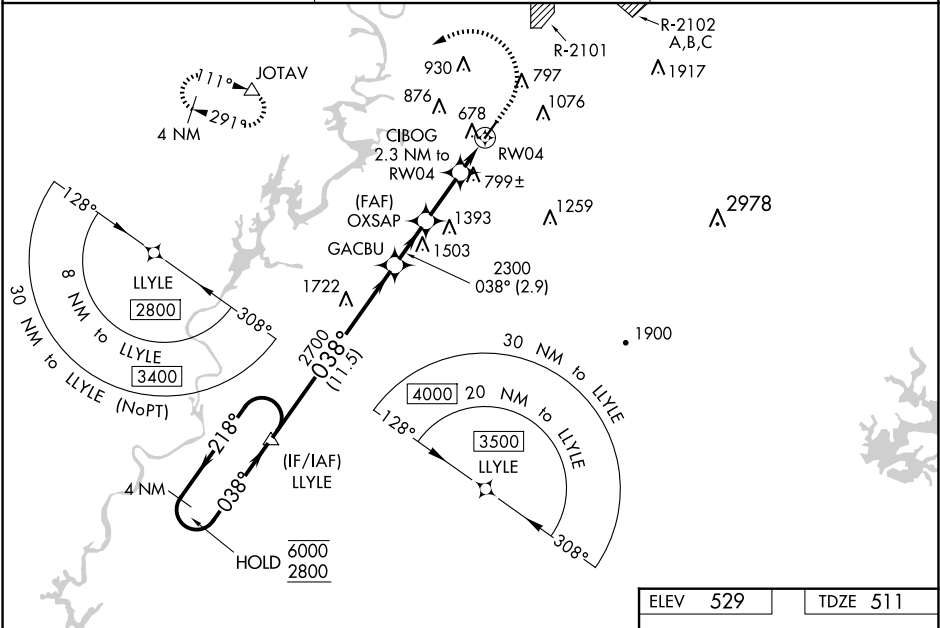


WAAS CH 61008 W04A	APP CRS 038°	Rwy Idg TDZE 511 Apt Elev 529
--	------------------------	---

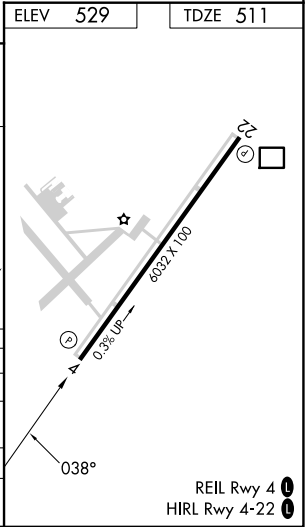
RNAV (GPS) RWY 4
TALLADEGA MUNI (ASN)

RNP APCH - GPS.	MISSED APPROACH: Climb to 1300 then climbing left turn to 3700 direct JOTAV and hold, continue climb-in-hold to 3700.
⚠ For uncompensated Baro-VNAV systems, LNAV/VNAV NA below -16°C or above 54°C.	

AWOS-3PT 118.425	BIRMINGHAM APP CON 132.15 285.45	UNICOM 122.8 (CTAF) 0
----------------------------	--	---------------------------------



VGSi and RNAV glidepath not coincident (VGSi Angle 3.00/TCH 65).		1300	3700	JOTAV
4 NM Holding Pattern		↑	↩	△
LLYLE				
6000 ← 218°				
2800 038° →				
GP 3.00° TCH 45				
11.5 NM		2.9 NM	3.2 NM	0.8 NM
CATEGORY	A	B	C	D
LPV DA	711-¾		200 (200-¾)	
LNAV/VNAV DA	884-1		373 (400-1)	
LNAV MDA	1060-1	549 (600-1)	1060-1½	549 (600-1½)
Ⓢ CIRCLING	1140-1 611 (700-1)	1180-1 651 (700-1)	1380-2½ 851 (900-2½)	1500-3 971 (1000-3)



SE-4, 07 AUG 2025 to 04 SEP 2025

SE-4, 07 AUG 2025 to 04 SEP 2025