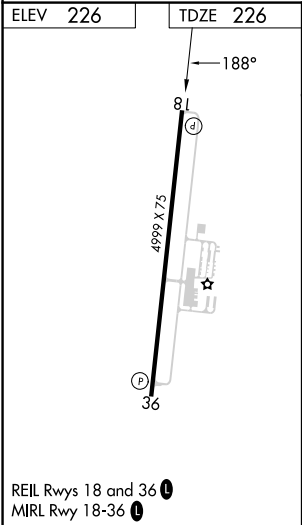
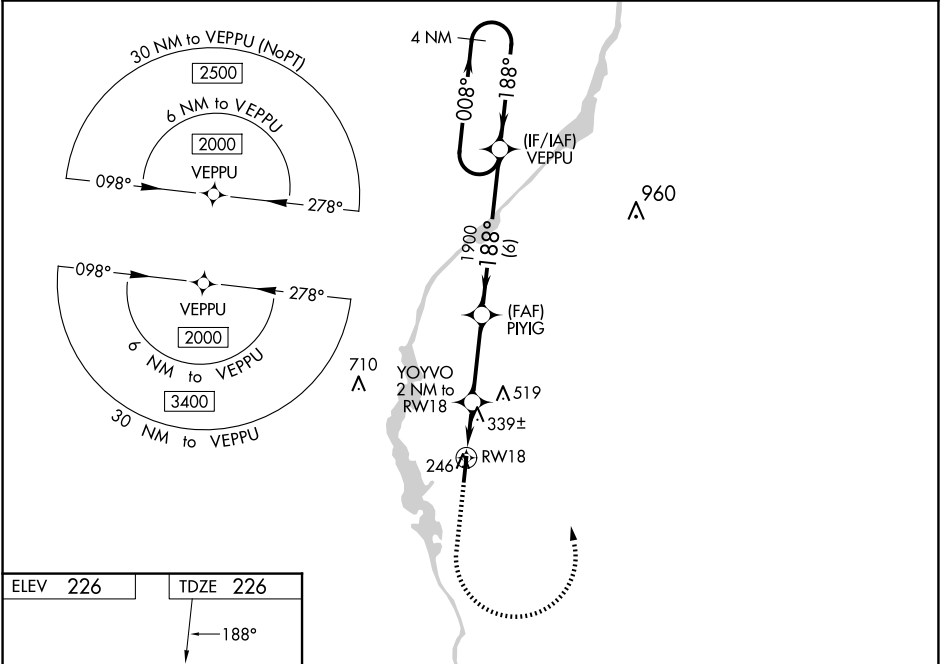


RNP APCH.

For uncompensated Baro-VNAV systems, LNAV/VNAV NA below -15°C or above 54°C.

MISSED APPROACH: Climb to 800 then climbing left turn to 2000 direct VEPPU and hold.

AWOS-3P 118.475	COLUMBUS APP CON ★ 126.075 239.25	UNICOM 122.8 (CTAF) 0
---------------------------	---	---------------------------------



800		2000	VEPPU	VGSI and RNAV glidepath not coincident (VGSI Angle 3.00/TCH 40).	
*LNAV only.		YOYVO	PIYG	VEPPU	4 NM Holding Pattern
*1.1 NM to RW18		2 NM to RW18	1900	188°	008° → 2000
*900		1900	188°	1900	GP 3.00° TCH 40
1.1 NM		0.9	3.1 NM	6 NM	
CATEGORY	A	B	C	D	
LPV DA	476-¾		250 (300-¾)		
LNAV/VNAV DA	504-⅞		278 (300-⅞)		
LNAV MDA	600-1		374 (400-1)		
CIRCLING	660-1 434 (500-1)	680-1 454 (500-1)	820-1½ 594 (600-1½)	860-2 634 (700-2)	