

WAAS
CH **49222**
W08A

APP CRS
084°

Rwy Idg
TDZE **698**
Apt Elev **698**

RNAV (GPS) RWY 8

WEST MICHIGAN RGNL (BIV)

RNP APCH - GPS.

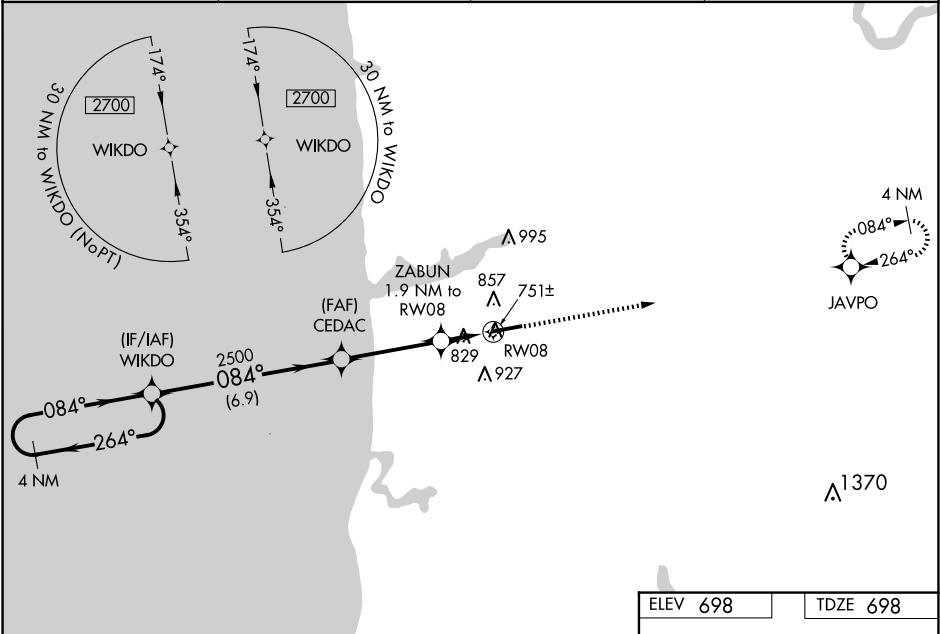
⚠

For uncompensated Baro-VNAV systems, LNAV/VNAV NA below -16°C or above 54°C. When local altimeter setting not received, use Muskegon altimeter setting: increase LPV DA to 1018 feet, increase LNAV/VNAV DA to 1160 feet, and all visibilities ¼ SM, increase all MDAs 80 feet, and visibility LNAV Cat C/D ¼ SM and Circling Cat C/D ¼ SM. Baro-VNAV and VDP NA when using Muskegon altimeter setting.

MISSED APPROACH:

Climb to 3000 direct JAVPO and hold.

ASOS 119.025	GREAT LAKES APP CON* 133.825 290.35	CLNC DEL 123.95	UNICOM 123.05 (CTAF) 1
------------------------	---	---------------------------	----------------------------------



4 NM Holding Pattern WIKDO

2700

GP 3.00° TCH 40

264°

084°

084°

2500

2500

*1340

084°

084°

3000

JAVPO

*LNAV only

3000

JAVPO

6.9 NM

3.6 NM

0.8 NM

1.1 NM

CEDAC

ZABUN

RWY 08

1.9 NM to RWY 08

1.1 NM to RWY 08

084° to RWY 08

CATEGORY	A	B	C	D
LPV DA	948-7⁄8 250 (300-7⁄8)			
LNAV/VNAV DA	1080-1 382 (400-1)			
LNAV MDA	1080-1	382 (400-1)	1080-1 382 (400-1)	382 (400-1)
CIRCLING	1200-1 502 (600-1)	1240-1 542 (600-1)	1240-1 542 (600-1)	1320-2 622 (700-2)

REIL Rwy 8 1

HIRL Rwy 8-26 1