

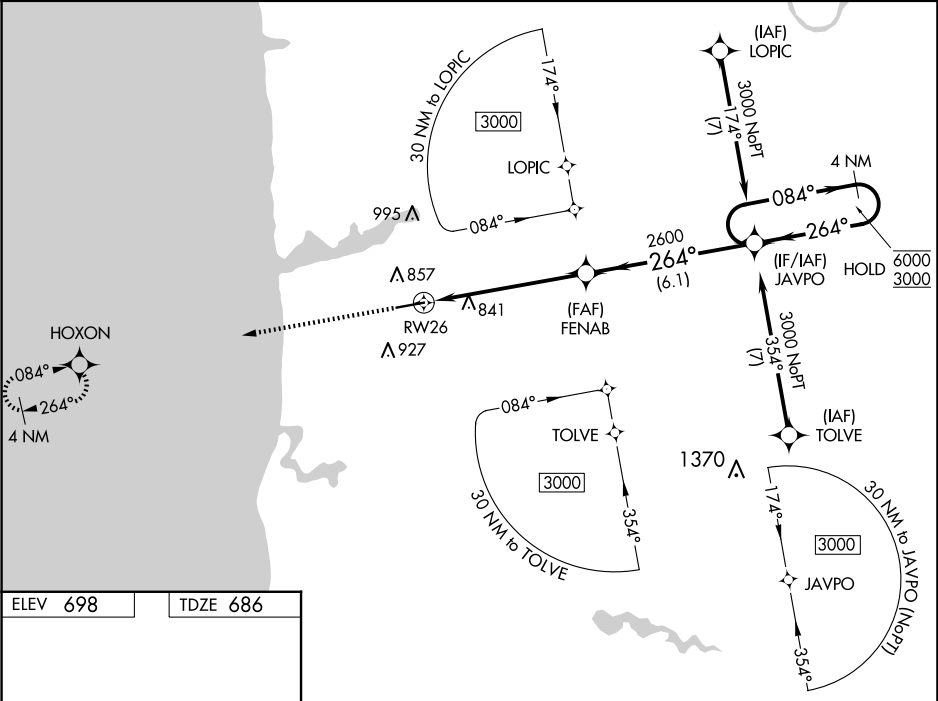
WAAS CH 53402 W26A	APP CRS 264°	Rwy Idg TDZE 686 Apt Elev 698
--	------------------------	---

RNAV (GPS) RWY 26

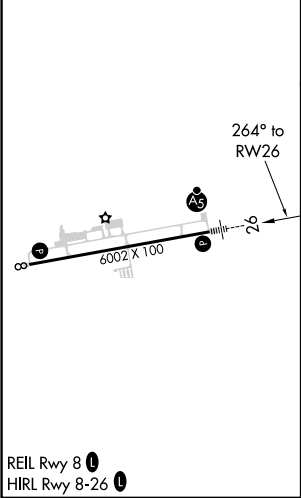
WEST MICHIGAN RGNL (BIV)

RNP APCH. ⚠ ⚠ For uncompensated Baro-VNAV systems, LNAV/VNAV NA below -16°C or above 54°C. For inoperative ALS, increase LNAV/VNAV all Cats visibility to 1 SM; increase LNAV Cat C visibility to 1 1⁄8 SM.	MALSR ⚠	MISSED APPROACH: Climb to 2700 direct HOXON and hold.
---	------------	--

ASOS 119.025	GREAT LAKES APP CON* 133.825 290.35	CLNC DEL 123.95	UNICOM 123.05 (CTAF) ⚠
------------------------	---	---------------------------	----------------------------------



ELEV 698	TDZE 686
-----------------	-----------------



2700	HOXON	*LNAV only	JAVPO	4 NM Holding Pattern
↑	⚠	*1.2 NM to RW26	FENAB	
		RW26	2600	264°
		1.2	4.7 NM	6.1 NM
CATEGORY	A	B	C	D
LPV DA	886-1⁄2	200 (200-1⁄2)		NA
LNAV/VNAV DA	1040-5⁄8	354 (400-5⁄8)		NA
LNAV MDA	1100-1⁄2	414 (500-1⁄2)	1100-3⁄4 414 (500-3⁄4)	NA
Ⓢ CIRCLING	1200-1 502 (600-1)	1240-1 542 (600-1)	1240-1 1⁄2 542 (600-1 1⁄2)	NA