

LOC/DME I-BIV

110.55

APP CRS

264°

Rwy Idg

6002

TDZE

686

Apt Elev

698

Chan 42 (Y)

ILS or LOC RWY 26

WEST MICHIGAN RGNL (BIV)

DME required.

NA

MALSR

MISSED APPROACH: Climb to 1500 then climbing right turn to 2600 on heading 020° and VIO VOR/DME R-285 to ZEELE/VIO 25.7 DME and hold.

ASOS

119.025

GREAT LAKES APP CON\*

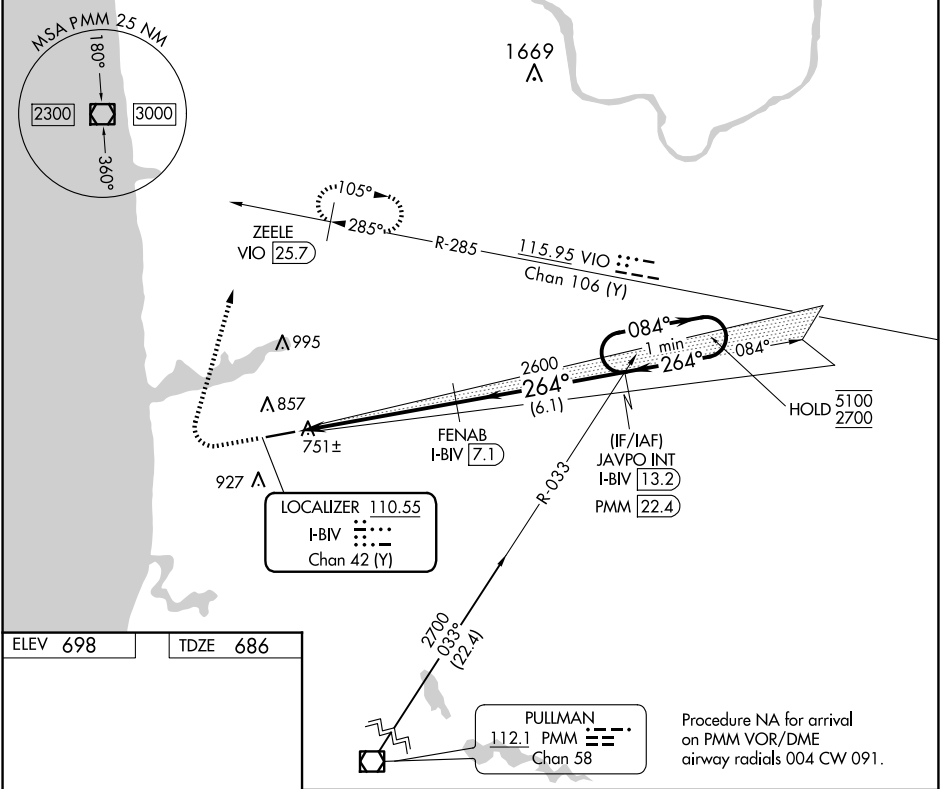
133.825 290.35

CLNC DEL

123.95

UNICOM

123.05 (CTAF) 0



ELEV 698

TDZE 686

REIL Rwy 8 0

HIRL Rwy 8-26 0

1500

2600

2700

5100

2700

hdg 020°

264°

084°

264°

\*LOC only

\*I-BIV

I-BIV 1.2

VIO R-285

ZEELE VIO 25.7

FENAB I-BIV 7.1

JAVPO INT I-BIV 13.2

0.9 NM

5 NM

6.1 NM

GS 3.00°

TCH 32

CATEGORY	A	B	C	D
S-ILS 26	886-1/2	200 (200-1/2)		NA
S-LOC 26	1020-1/2	334 (400-1/2)		NA
CIRCLING	1200-1 502 (600-1)	1240-1 542 (600-1)	1240-1 1/2 542 (600-1 1/2)	NA

EC-1, 07 AUG 2025 to 04 SEP 2025

EC-1, 07 AUG 2025 to 04 SEP 2025