

APP CRS 032°	Rwy Idg	7110
	TDZE	1470
	Apt Elev	1510

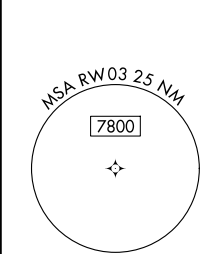
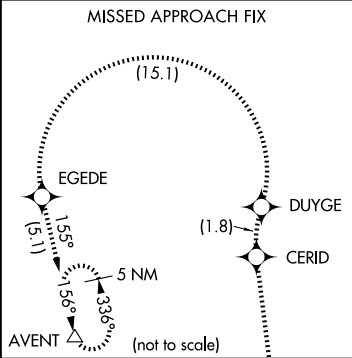
RNAV (RNP) Z RWY 3

SCOTTSDALE (SDL)

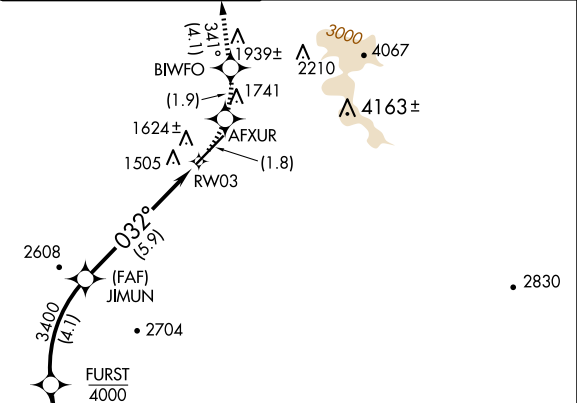
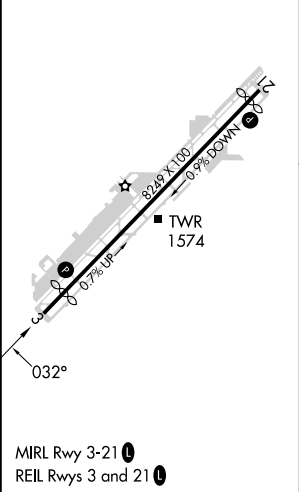
⚠ RF and GPS required. Visibility reduction by helicopters NA.
For uncompensated Baro-VNAV systems, procedure NA below 1°C (31°F) or above 54°C (130°F). When local altimeter setting not received procedure NA. Missed approach requires RNP less than 1.0.

MISSED APPROACH: Climb to 5000 via left turn to AFXUR, and via left turn to BIWFO, and via track 341° to CERID, and via right turn to DUYGE, and via left turn to EGEDE, and via track 155° to AVENT and hold.

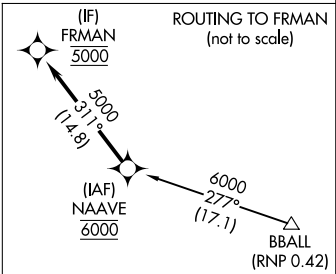
ATIS 118.6	PHOENIX APP CON 120.7 239.0	SCOTTSDALE TOWER ★ 119.9 (CTAF) 0	GND CON 121.6	CLNC DEL 124.8
----------------------	---------------------------------------	---	-------------------------	--------------------------



ELEV 1510	D	TDZE 1470
-----------	----------	-----------



SEE INSET FOR ROUTING TO FRMAN



VGSI and RNAV glidepath not coincident (VGSI Angle 4.00/TCH 59°).			
FRMAN	FURST	AFXUR	BIWFO
5000	340°	JIMUN	3400
Procedure Turn NA	4000	032°	RW03
GP 3.00°	3400		
TCH 60			
13.7 NM 4.1 NM 5.9 NM			
CATEGORY	A	B	C
RNP 0.30 DA	1829-1¼	359 (400-1¼)	NA

AUTHORIZATION REQUIRED