

APP CRS	Rwy Idg	7110
032°	TDZE	1470
	Apt Elev	1510

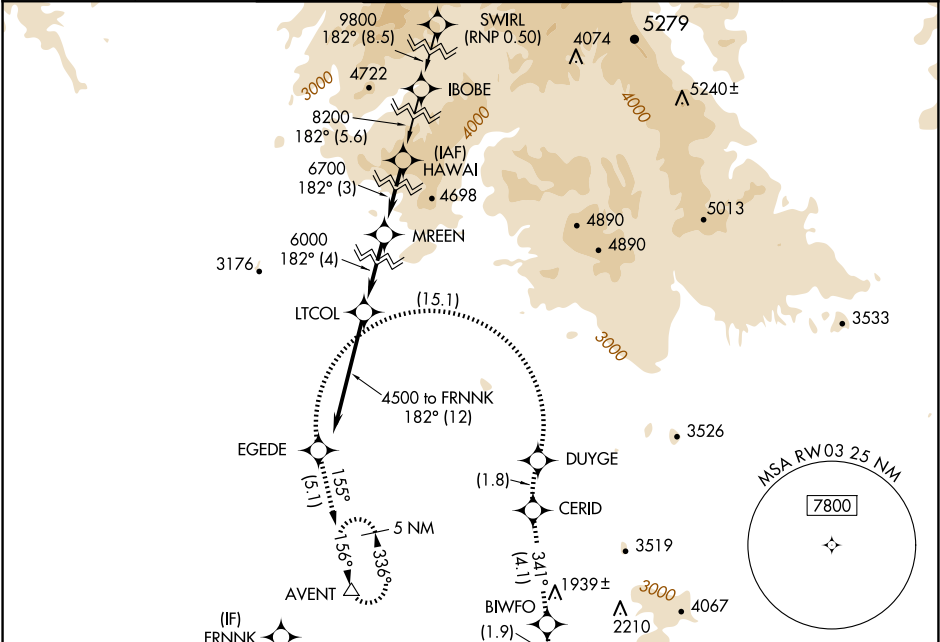
RNAV (RNP) Y RWY 3

SCOTTSDALE (SDL)

⚠ RF and GPS required. Visibility reduction by helicopters NA.  
For uncompensated Baro-VNAV systems, procedure NA below  
1°C (31°F) or above 54°C (130°F). When local altimeter setting not  
received procedure NA. Missed approach requires RNP less than 1.0.

MISSED APPROACH: Climb to 5000 via left turn to  
AFXUR, and via left turn to BIWFO, and via track 341°  
to CERID, and via right turn to DUYGE, and via left turn  
to EGEDE, and via track 155° to AVENT and hold.

ATIS	PHOENIX APP CON	SCOTTSDALE TOWER*	GND CON	CLNC DEL
118.6	120.7 239.0	119.9 (CTAF) 0	121.6	124.8



VGSI and RNAV glidepath not coincident (VGSI Angle 4.00/TCH 59).

FRNNK 4500 Procedure Turn NA GP 3.00° TCH 60

ANNDD 4000

RUTHH 3600

GRYHM 2542

RW03 032°

4 NM 2 NM 3.2 NM 3.3 NM

CATEGORY	A	B	C	D
RNP 0.30 DA	1829-1¼	359 (400-1¼)		NA

**AUTHORIZATION REQUIRED**

5000 AFXUR BIWFO

032°

8249 x 100 0.7% UP 0.9% DOWN

TWR 1574

MIRL Rwy 3-21 0

REIL Rwy 3 and 21 0