

APP CRS
212°

Rwy Idg
TDZE
1507

Apt Elev
1510

RNAV (RNP) RWY 21

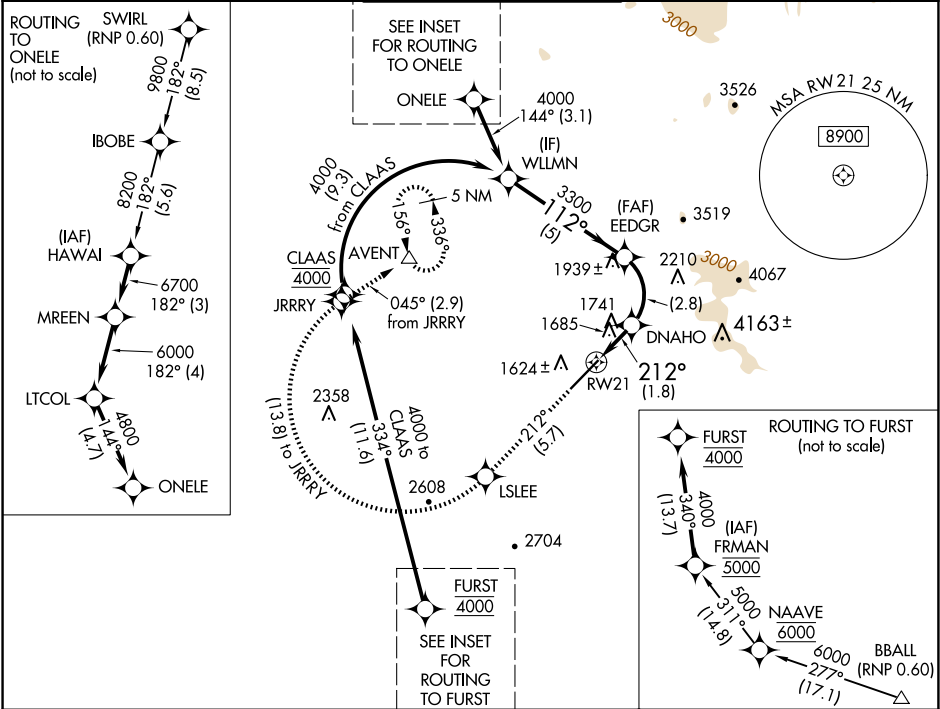
SCOTTSDALE (SDL)

RNP AR APCH - GPS, RF, min RNP 0.60. Authorization required.

▼ For uncompensated Baro-VNAV systems, procedure NA below 1°C or above 54°C. When local altimeter setting not received procedure NA.

MISSED APPROACH: Climb to 5000 on track 212° to LSLEE and right turn to JRRRY and on track 045° to AVENT and hold.

ATIS 118.6	PHOENIX APP CON 120.7 239.0	SCOTTSDALE TOWER ★ 119.9 (CTAF) 0	GND CON 121.6	CLNC DEL 124.8
----------------------	---------------------------------------	---	-------------------------	--------------------------



5000
↑
tr 212°

LSLEE

JRRRY

tr 045°

AVENT

VGSI and RNAV glidepath not coincident
(VGSI Angle 4.00/TCH 40).

DNAHO 2249

EEDGR 3300

WLLMN 4000

RW21 212°

2249

3300

112°

GP 3.53° TCH 60

1.8 NM

2.8 NM

5 NM

CATEGORY	A	B	C	D
RNP 0.16 DA	1993-13/8	486 (500-13/8)		NA

AUTHORIZATION REQUIRED

ELEV 1510

D

TDZE 1507