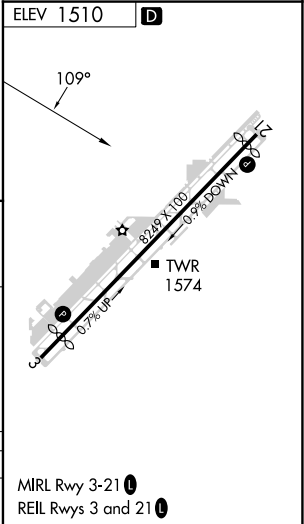
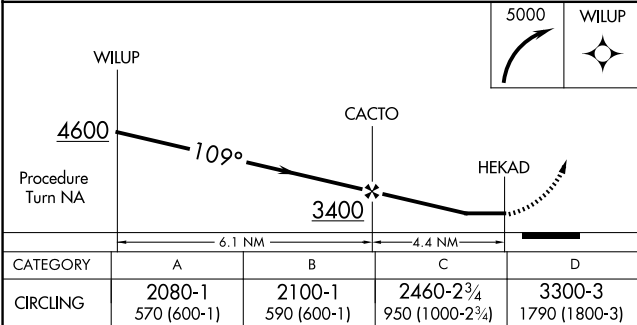
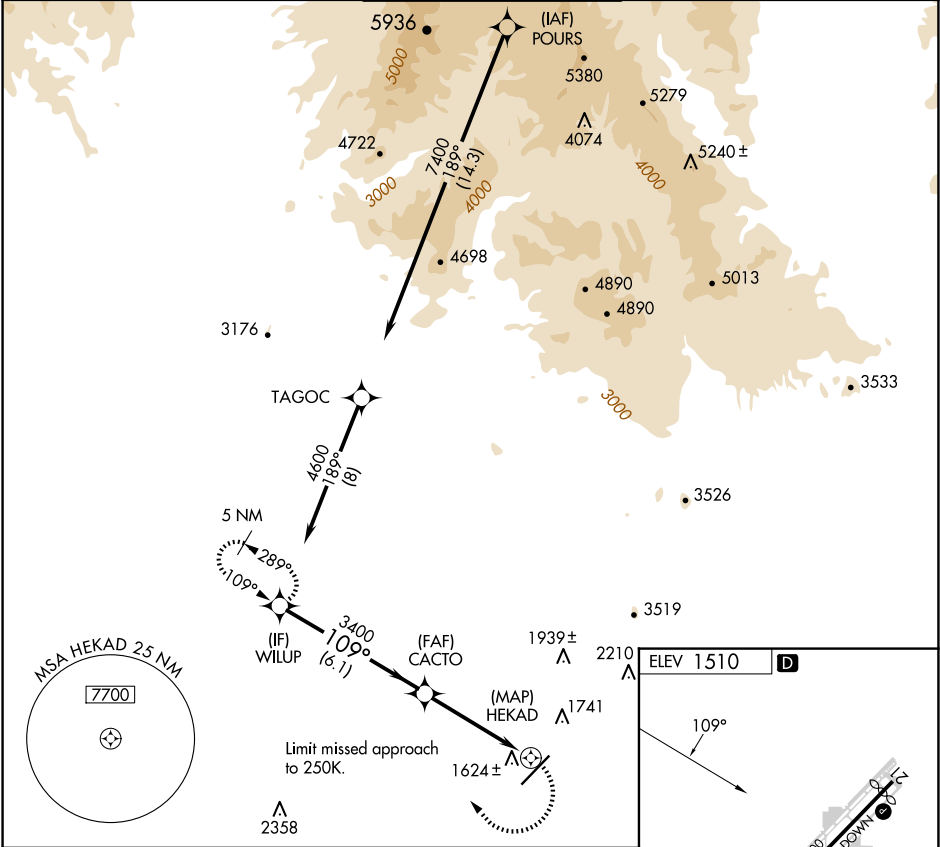


APP CRS	Rwy Idg	N/A
109°	TDZE	N/A
	Apt Elev	1510

RNAV (GPS)-D  
SCOTTSDALE (SDL)

<p>⚠ When VGSI inoperative, circling Rwy 21 NA at night. When local altimeter setting not received, use Phoenix Sky Harbor Int altimeter setting and increase all MDA 100 feet and increase visibility Cat C ¼ SM. DME/DME RNP-0.3 NA.</p>	<p>MISSED APPROACH: Climbing right turn to 5000 direct WILUP and hold, continue climb-in-hold to 5000.</p>
--	--

ATIS 118.6	PHOENIX APP CON 120.7 239.0	SCOTTSDALE TOWER ★ 119.9 (CTAF) 0	GND CON 121.6	CLNC DEL 124.8
---------------	--------------------------------	--------------------------------------	------------------	-------------------



SW-4, 07 AUG 2025 to 04 SEP 2025

SW-4, 07 AUG 2025 to 04 SEP 2025