

SW-4, 07 AUG 2025 to 04 SEP 2025

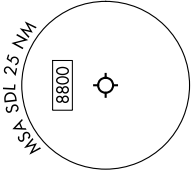
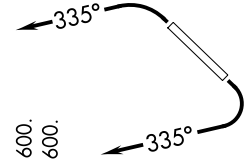
PHOENIX DEP CON  
120.7 239.0  
ATIS  
118.6  
CLNC DEL  
124.8  
GND CON  
121.6  
SCOTTSDALE TOWER\*  
119.9

TOP ALTITUDE:  
ASSIGNED BY ATC

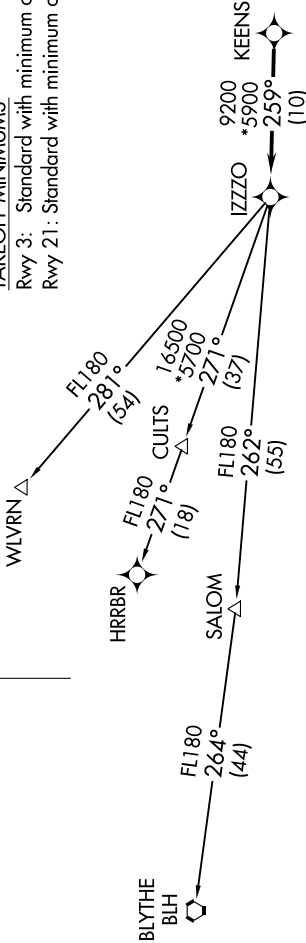
- NOTE: Turbojets and turboprops only.  
NOTE: Aircraft requesting FL220 and below must file BLYTHE Transition..  
NOTE: Turbojets landing LAX, file WLVRN Transition.  
NOTE: Aircraft landing other than LAX and turboprops landing at LAX: Requesting FL240 and above, file HRRBR Transition.  
NOTE: Aircraft departing KGEU and KGYR ATC assigned only.  
NOTE: Rwy 21: Do not exceed 210K until established on assigned heading.

TAKEOFF MINIMUMS

- Rwy 3: Standard with minimum climb of 445' /NM to 4600.  
Rwy 21: Standard with minimum climb of 300' /NM to 4600.



NOTE: Chart not to scale.



DEPARTURE ROUTE DESCRIPTION

- TAKEOFF RUNWAY 3: Climbing left turn heading 335° or as assigned by ATC, thence. . . .  
TAKEOFF RUNWAY 21: Climbing right turn heading 335° or as assigned by ATC. Thence. . . .  
... for RADAR vectors to KEENS, then on track 259° to IZZZO, then on (transition).  
Maintain ATC assigned altitude, expect filed altitude 3 minutes after departure.

- BLYTHE TRANSITION (IZZZO8.BLH)  
HRRBR TRANSITION (IZZZO8.HRRBR)  
WLVRN TRANSITION (IZZZO8.WLVRN)

SW-4, 07 AUG 2025 to 04 SEP 2025