

WAAS CH <b>63219</b> <b>W34A</b>	APP CRS <b>340°</b>	Rwy Idg TDZE Apt Elev	<b>5000</b> <b>586</b> <b>586</b>
--	------------------------	-----------------------------	---

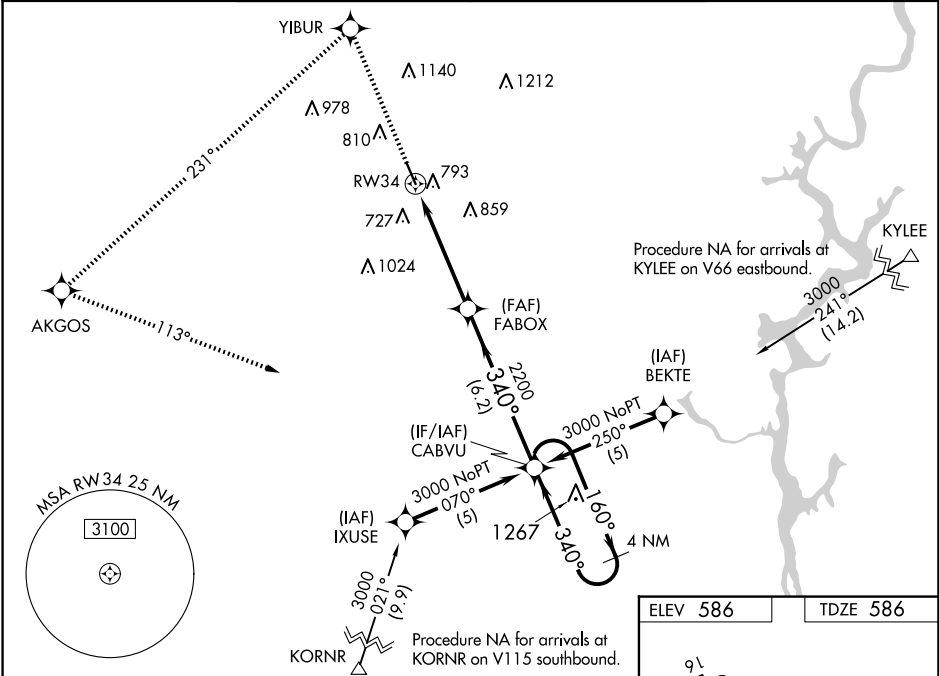
RNAV (GPS) RWY 34

SHELBY COUNTY (EET)

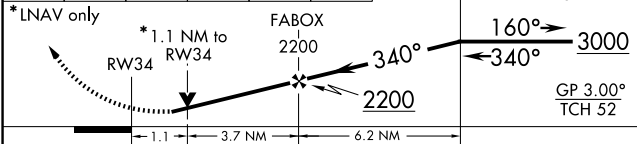
DME/DME RNP-0.3 NA. Visibility reduction by helicopters NA. When local altimeter setting not received, use Birmingham altimeter setting and increase all DA 63 feet and all MDA 80 feet; increase LPV all Cats, LNAV/VNAV all Cats and Circling Cat C visibilities 1/4 SM. Baro-VNAV NA when using Birmingham altimeter setting. For uncompensated Baro-VNAV systems, LNAV/VNAV NA below -16°C (4°F) or above 47°C (116°F). VDP NA with Birmingham altimeter setting.

MISSED APPROACH: Climb to 3000 direct YIBUR and left turn on track 231° to AKGOS and left turn on track 113° to CABVU and hold.

ASOS <b>134.325</b>	BIRMINGHAM APP CON <b>123.8 256.8</b>	GCO <b>121.725</b>	UNICOM <b>122.7 (CTAF) 0</b>
------------------------	--	-----------------------	---------------------------------



3000	YIBUR	AKGOS	CABVU
↑	tr 231°	tr 113°	tr 070°



CATEGORY	A	B	C	D
LPV DA	947-1 1/4	361 (400-1 1/4)		
LNAV/VNAV DA	1093-1 3/4	507 (600-1 3/4)		
LNAV MDA	1100-1 514 (600-1)	1100-1 1/2 514 (600-1 1/2)	1100-1 3/4 514 (600-1 3/4)	
CIRCLING	1120-1 534 (600-1)	1340-2 1/4 754 (800-2 1/4)	1580-3 994 (1000-3)	

