

VOR BJB

109.8

APP CRS

232°

Rwy Idg

3898

TDZE

884

Apt Elev

887

VOR RWY 24

WEST BEND MUNI (ETB)

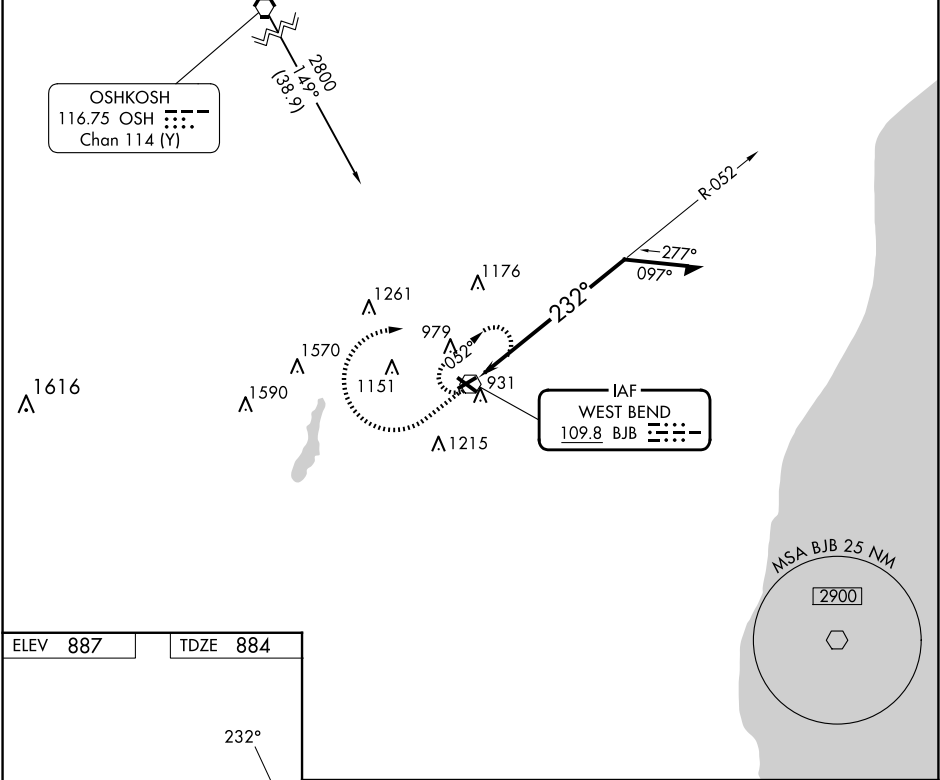
▼

⚠

Helicopter visibility reduction below 1 SM NA. When local altimeter setting not received, use Milwaukee/Lawrence J Timmerman altimeter setting and increase all MDA 80 feet, increase all Cat C/D visibilities ¼ mile. Night landing: Rwy 6, 24 NA.

MISSED APPROACH: Climb to 1900 then climbing right turn 2700 direct BJB VOR and hold, continue climb-in-hold to 2700.

AWOS-3 120.0	MILWAUKEE APP CON 125.35 307.0	CLNC DEL 124.75	UNICOM 123.05 (CTAF) 0
-----------------	-----------------------------------	--------------------	---------------------------



ELEV 887

TDZE 884

REIL Rwy 13 and 31

MIRL Rwy 6-24 and 13-31

1900	2700	BJB	<div><div><div><div><div></div><div></div></div><div><div></div><div></div></div></div><div><div><div><div></div><div></div></div><div><div></div><div></div></div></div><div><div><div><div></div><div></div></div><div><div></div><div></div></div></div><div><div><div><div></div><div></div></div><div><div></div><div></div></div></div></div><div>BJB VOR</div><div>052°</div><div>2700</div><div>232°</div><div>Remain within 10 NM</div></div></div></div></div>			
CATEGORY	A	B	C	D		
S-24	1500-1 616 (700-1)		1500-1¾ 616 (700-1¾)	1500-2 616 (700-2)		
CIRCLING	1500-1 613 (700-1)	1520-1 633 (700-1)	1560-2 673 (700-2)	1560-2¼ 673 (700-2¼)		

EC-3, 07 AUG 2025 to 04 SEP 2025

EC-3, 07 AUG 2025 to 04 SEP 2025