


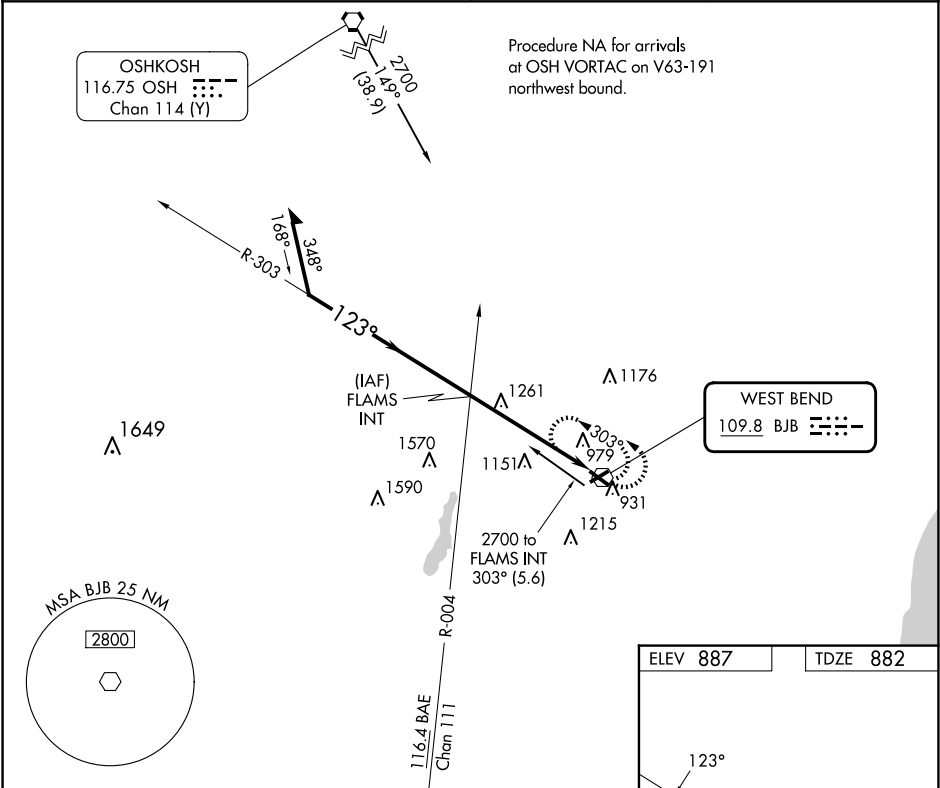
VOR BJB 109.8	APP CRS 123°	Rwy Idg 4494 TDZE 882 Apt Elev 887	VOR RWY 13 WEST BEND MUNI (ETB)
-------------------------	------------------------	---	------------------------------------



Rwy 13 helicopter visibility reduction below ¾ SM NA. When local altimeter setting not received, use Lawrence J Timmerman altimeter setting and increase all MDAs 80 feet and visibility Cat C/D ¼ SM.

MISSED APPROACH:
Climbing left turn to 2700 in BJB VOR holding pattern.

AWOS-3 120.0	MILWAUKEE APP CON 125.35 307.0	CLNC DEL 124.75	UNICOM 123.05 (CTAF) 0
------------------------	--	---------------------------	----------------------------------



Remain within 10 NM

2700 303°

123°

2700

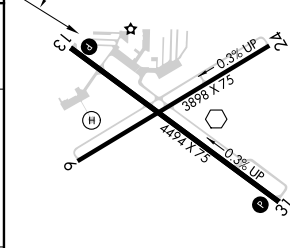
FLAMS INT

2700 BJB

5.6 NM

ELEV 887

TDZE 882



CATEGORY	A	B	C	D
S-13	1540-1	658 (700-1)	1540-1¾ 658 (700-1¾)	1540-2 658 (700-2)
CIRCLING	1540-1	653 (700-1)	1560-2 673 (700-2)	1560-2¼ 673 (700-2¼)

REIL Rwy 13 and 31 0
MIRL Rwy 6-24 and 13-31 0

EC-3, 07 AUG 2025 to 04 SEP 2025

EC-3, 07 AUG 2025 to 04 SEP 2025