

WAAS CH 70716 W24A	APP CRS 240°	Rwy Idg TDZE Apt Elev	3898 884 887
--	------------------------	-----------------------------	---

RNAV (GPS) RWY 24

WEST BEND MUNI (E/TB)

RNP APCH - GPS.

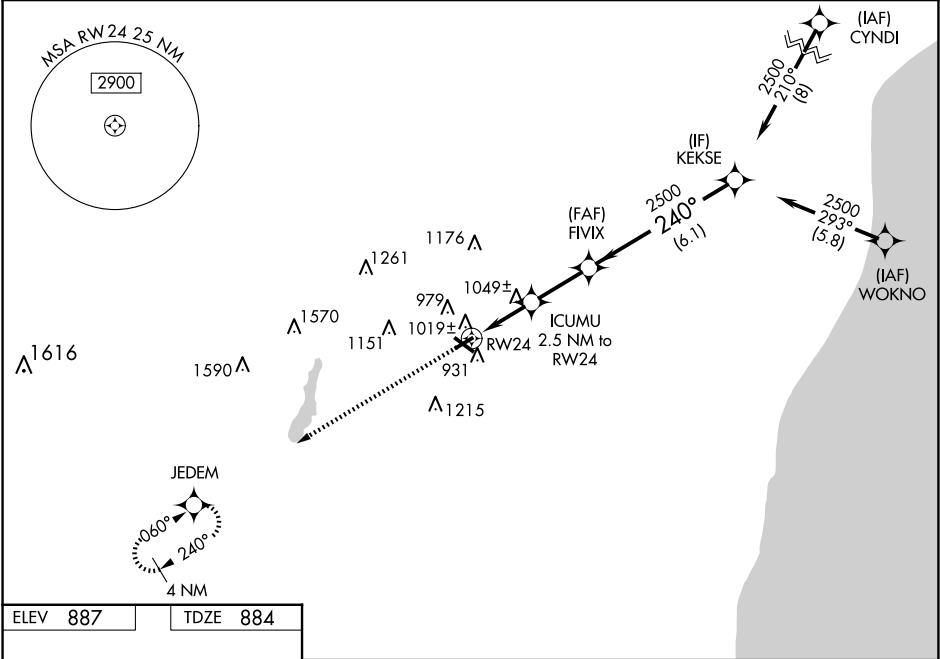
▼

▲

For uncompensated Baro-VNAV systems, LNAV/VNAV NA below -16°C or above 47°C. Rwy 24 helicopter visibility reduction below ¾ SM NA. Baro-VNAV and VDP NA when using Lawrence J Timmerman altimeter setting. When local altimeter setting not received, use Milwaukee/Lawrence J Timmerman altimeter setting and increase LPV DA to 1260 feet; LNAV/VNAV DA to 1433 feet and all visibility ¾ SM; increase all MDA 80 feet and LNAV Cat C/D and Circling Cat C/D visibility ¾ SM.

MISSED APPROACH:
Climb to 3000 direct JEDEM and hold.

AWOS-3 120.0	MILWAUKEE APP CON 125.35 307.0	CLNC DEL 124.75	UNICOM 123.05 (CTAF) 0
------------------------	--	---------------------------	----------------------------------



ELEV 887	TDZE 884
----------	----------

3000

JEDEM

240°

240°

* LNAV only

ICUMU 2.5 NM to RW24

FIVIX

KEKSE

Procedure Turn NA

2500

GP 3.00° TCH 45

1.2 NM

1.3 NM

2.4 NM

6.1 NM

CATEGORY	A	B	C	D
LPV DA	1196-1 312 (400-1)			
LNAV/VNAV DA	1369-1¼ 485 (500-1¼)			
LNAV MDA	1300-1 416 (500-1)	1300-1¼ 416 (500-1¼)		
CIRCLING	1420-1 533 (600-1)	1520-1 633 (700-1)	1560-2 673 (700-2)	1560-2¼ 673 (700-2¼)

REIL Rwy 13 and 31 0
MIRL Rwy 6-24 and 13-31 0