

WAAS  
CH **93528**  
**W36A**

APP CRS  
**359°**

Rwy Idg  
TDZE **343**

Apt Elev  
**343**

**RNAV (GPS) RWY 36**

NACOGDOCHES A L MANGHAM JR RGNL (OCH)

RNP APCH-GPS.  
Baro-VNAV NA when using Lufkin altimeter setting. For uncompensated Baro-VNAV systems, LNAV/VNAV NA below -15°C or above 54°C. When local altimeter setting not received, use Lufkin altimeter setting: increase LPV DA to 599 feet, LNAV/VNAV DA to 681 feet, and visibility LNAV/VNAV all Cats ½ SM, increase all MDA 60 feet and visibility LNAV Cat C ½ SM and Circling Cat C ½ SM.

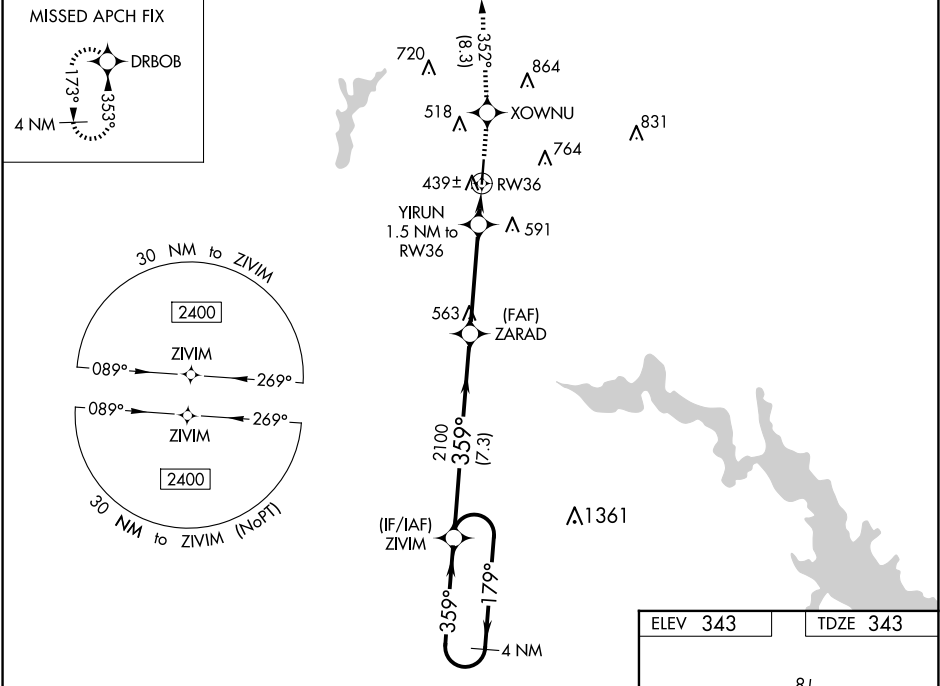
MALSR

MISSED APPROACH: Climb to 2400 direct XOWNU and on track 352° to DRBOB and hold.

AWOS-3PT  
**135.625**

HOUSTON CENTER  
**125.175 285.575**

UNICOM  
**123.0 (CTAF)**



4 NM Holding Pattern

2400

XOWNU

DRBOB

GP 3.00°

TCH 53

\*LNAV only.

\*840

CATEGORY

A

B

C

D

LPV DA

543-½ 200 (200-½)

NA

LNAV/VNAV DA

625-½ 282 (300-½)

NA

LNAV MDA

700-½ 357 (400-½)

700-⅝ 357 (400-⅝)

NA

CIRCLING

860-1 517 (600-1)

1080-2 737 (800-2)

NA

ELEV 343

TDZE 343

REIL Rwy 18

MIRL Rwy 18-36

NACOGDOCHES, TEXAS  
Orig-D 03NOV22

NACOGDOCHES A L MANGHAM JR RGNL (OCH)

31°35'N-94°43'W

**RNAV (GPS) RWY 36**