

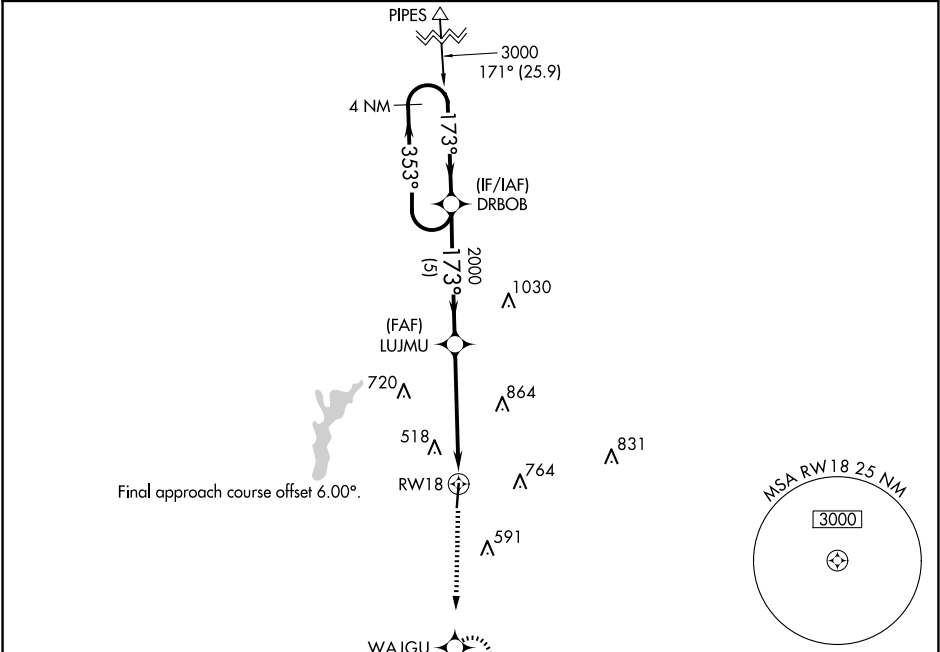
APP CRS	Rwy Idg	5000
173°	TDZE	343
	Apt Elev	343

RNAV (GPS) RWY 18

NACOGDOCHES A L MANGHAM JR RGNL (OCH)

RNP APCH-GPS.	Rwy 18 helicopter visibility reduction below 1 SM NA. When local altimeter setting not received, use Lufkin altimeter setting and increase all MDA 60 feet and visibility LNAV Cat C and Circling Cat C ¼ SM.	MISSED APPROACH: Climb to 2400 direct WAJGU and hold.
---------------	---	---

AWOS-3PT 135.625	HOUSTON CENTER 125.175 285.575	UNICOM 123.0(CTAF) 0
---------------------	-----------------------------------	-------------------------



Procedure NA for arrival on LFK VORTAC airway radials 318 CW 082.

Visual Segment - Obstacles.

2400 WAJGU

LUJMU

RW18

3000 to DRBOB 355° (35.3)

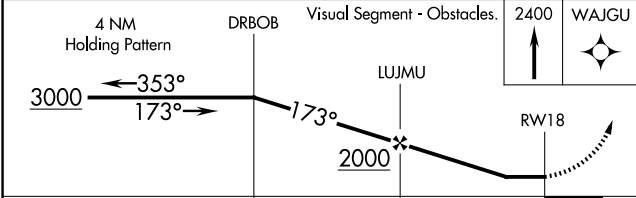
LUFKIN LFK

1361

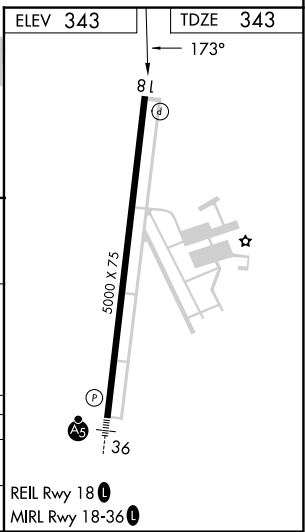
4093

801

4 NM



CATEGORY	A	B	C	D
LNAV MDA	980-1	637 (700-1)	980-1¾ 637 (700-1¾)	NA
CIRCLING	980-1	637 (700-1)	1080-2 737 (800-2)	NA



SC-5, 07 AUG 2025 to 04 SEP 2025

SC-5, 07 AUG 2025 to 04 SEP 2025