

LOC/DME I-CH <b>111.5</b> Chan <b>52</b>	APP CRS <b>359°</b>	Rwy ldg <b>5000</b> TDZE <b>343</b> Apt Elev <b>343</b>
--	------------------------	---

ILS or LOC RWY 36

NACOGDOCHES A L MANGHAM JR RGNL (OCH)

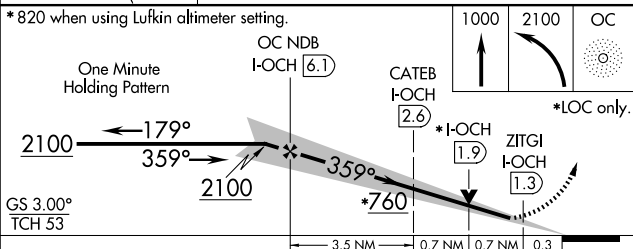
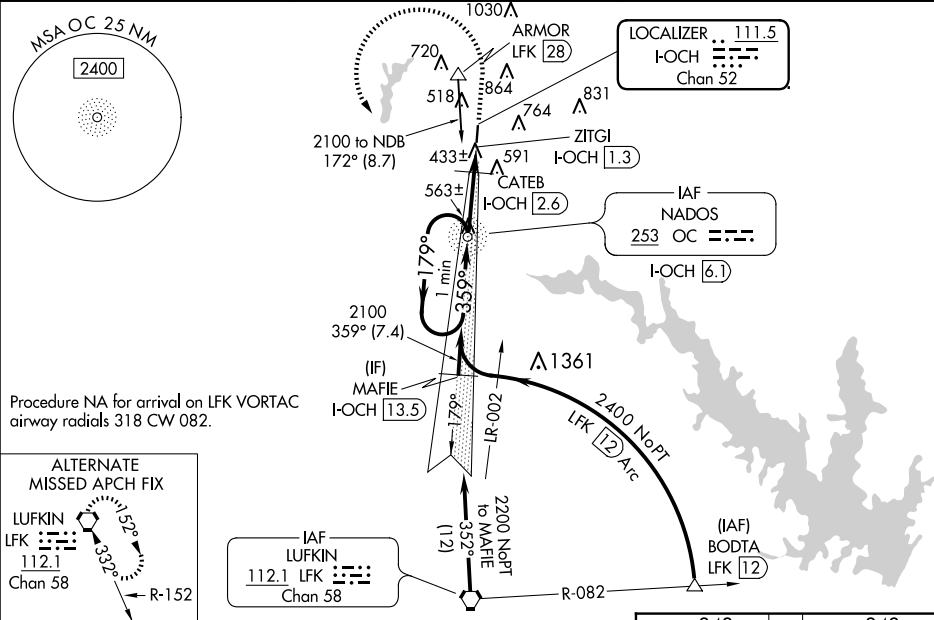
ADF or DME required.

When local altimeter setting not received, use Lufkin altimeter setting:  
increase S-ILS 36 DA to 599 feet; increase all MDA 60 feet and visibility  
S-LOC 36 and Circling Cat C and CATEB FIX minimums S-LOC 36 and Circling  
Cat C ¼ SM. VDP NA when using Lufkin altimeter setting. Localizer unusable  
inside 0.3 NM from threshold. Autopilot coupled approach NA below 740.



MISSED APPROACH: Climb  
to 1000 then climbing left turn  
to 2100 direct NADOS/OC  
NDB and hold.

AWOS-3PT <b>135.625</b>	HOUSTON CENTER <b>125.175 285.575</b>	UNICOM <b>123.0 (CTAF)</b>
----------------------------	--	-------------------------------



CATEGORY	A	B	C	D
S-ILS 36	543-½ 200 (200-½)			NA
S-LOC 36	760-½ 417 (500-½)		760-¾ 417 (500-¾)	NA
CIRCLING	860-1 517 (600-1)		1080-2 737 (800-2)	NA
CATEB FIX MINIMUMS (DME REQUIRED)				
S-LOC 36	700-½ 357 (400-½)		700-⅝ 357 (400-⅝)	NA
CIRCLING	860-1 517 (600-1)		1080-2 737 (800-2)	NA

