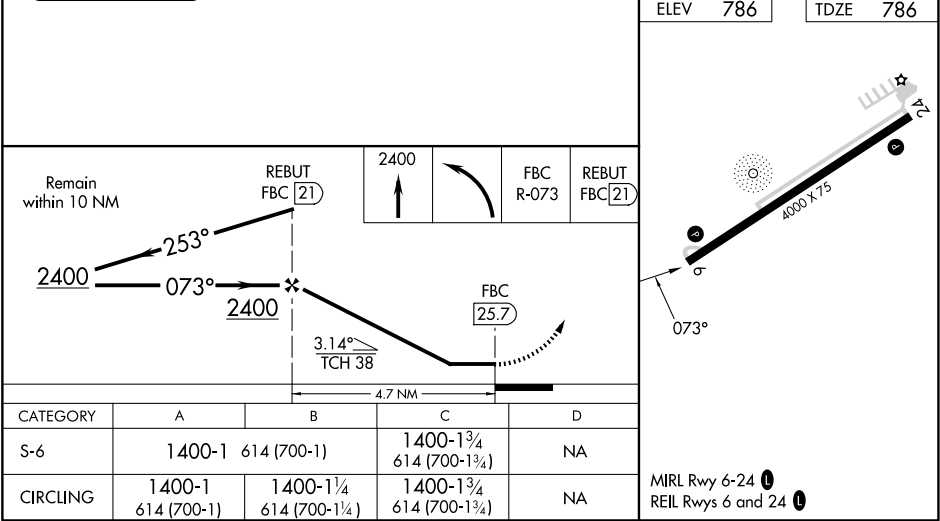
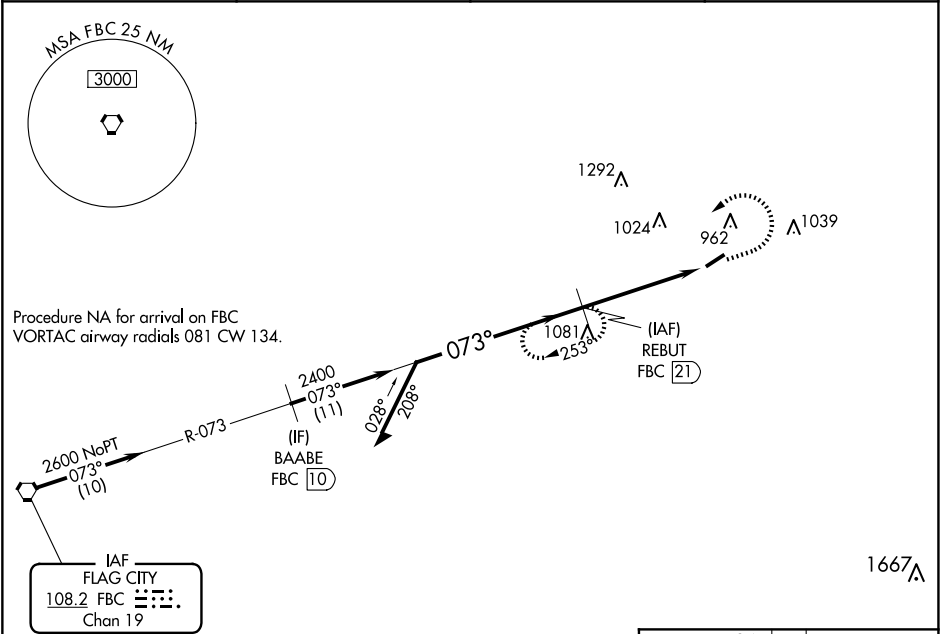


VORTAC FBC	APP CRS	Rwy Idg	4000
108.2	073°	TDZE	786
Chan 19		Apt Elev	786

VOR RWY 6  
SENECA COUNTY (16G)

DME required.		MISSED APPROACH: Climb to 2400 then left turn on FBC VORTAC R-073 to REBUT/FBC 21 DME and hold.
	Procedure NA for arrival on FBC VORTAC airway radials 081 CW 134.	

AWOS-3 127.175	FDY ASOS 132.85	TOLEDO APP CON 120.8 317.55	UNICOM 123.0 (CTAF)
-------------------	--------------------	--------------------------------	------------------------



EC-2, 07 AUG 2025 to 04 SEP 2025

EC-2, 07 AUG 2025 to 04 SEP 2025