

TIFFIN, OHIO

AL-5645 (FAA)

23054

WAAS CH <b>77713</b> <b>W06A</b>	APP CRS <b>061°</b>	Rwy Idg <b>4000</b> TDZE <b>786</b> Apt Elev <b>786</b>
--	------------------------	---

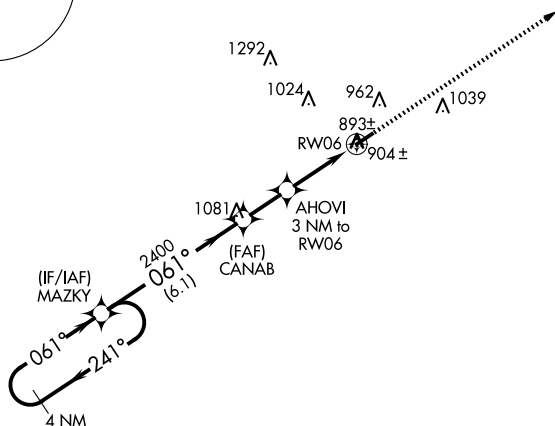
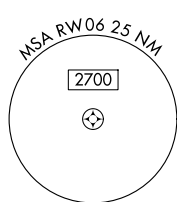
RNAV (GPS) RWY 6  
SENECA COUNTY (16G)

RNP APCH.

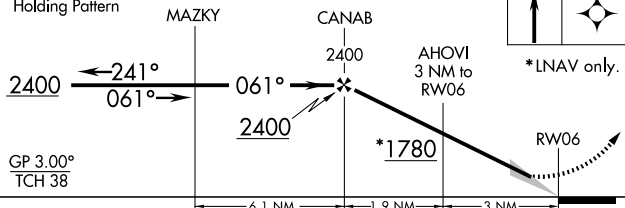
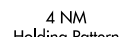
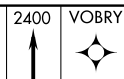
**NA** Circling to Rwy 24 NA at night. Baro-VNAV NA when using Findlay altimeter setting. For uncompensated Baro-VNAV systems, LNAV/VNAV NA below -16°C or above 54°C. When local altimeter setting not received, use Findlay altimeter setting and increase all DA/MDA 60 feet, increase LPV all Cats ¼ SM and LNAV and Circling Cat C visibility ¼ SM.

**MISSED APPROACH:**  
Climb to 2400 direct  
VOBRY and hold.

AWOS-3 <b>127.175</b>	FDY ASOS <b>132.85</b>	TOLEDO APP CON <b>120.8 317.55</b>	UNICOM <b>123.0</b> (CTAF) <b>0</b>
--------------------------	---------------------------	---------------------------------------	--



ELEV	786		TDZE	786
------	-----	--	------	-----



CATEGORY	A	B	C	D
LPV DA	1137-1¼	351 (400-1¼)		NA
LNAV/VNAV DA	1174-1½	388 (400-1½)		NA
LNAV MDA	1160-1	374 (400-1)		NA
CIRCLING	1280-1	494 (500-1)	1340-1½ 554 (600-1½)	NA

MIRL Rwy 6-24 **L**  
REIL Rwys 6 and 24 **L**

TIFFIN, OHIO

Orig-C 27JAN22

41°06'N-83°13'W

SENECA COUNTY (16G)

## RNAV (GPS) RWY 6

EC-2, 07 AUG 2025 to 04 SEP 2025