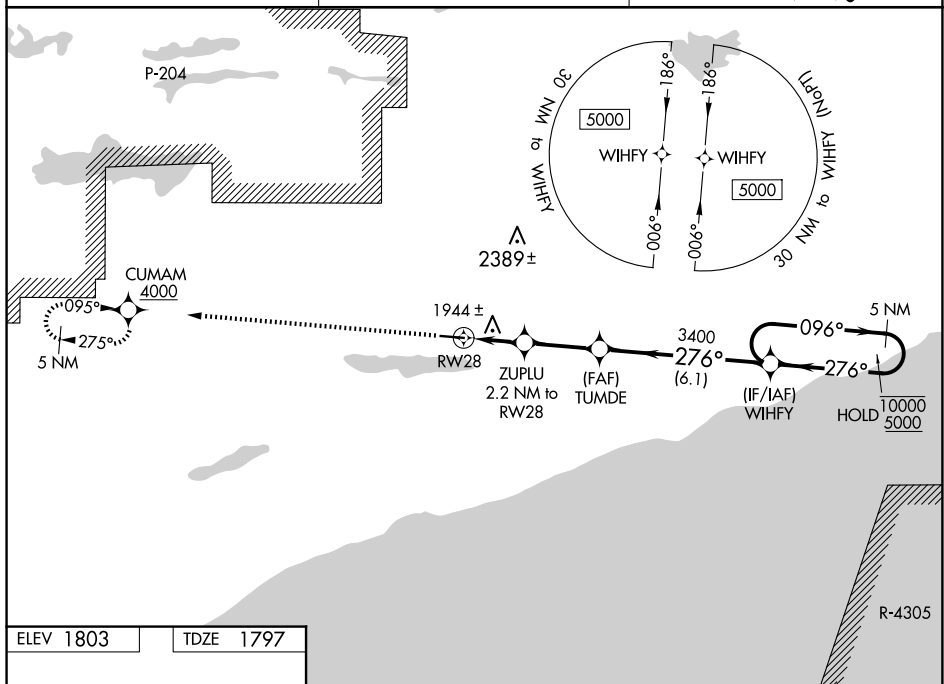



RNAV (GPS) RWY 28

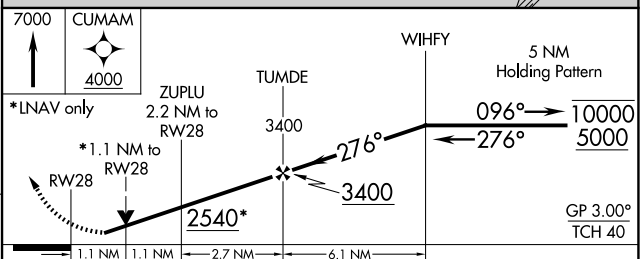
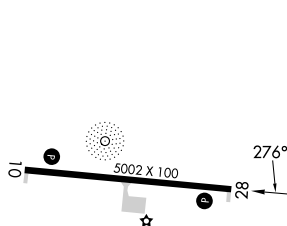
GRAND MARAIS/COOK COUNTY (CKC)


⚠ Circling Rwy 10 NA at night. Rwy 28 helicopter visibility reduction below $\frac{3}{4}$ SM NA. For uncompensated Baro-VNAV systems, LNAV/VNAV NA below -18°C or above 54°C.

MISSED APPROACH: Climb to 7000 direct CUMAM, cross CUMAM at or above 4000 and hold, continue climb-in-hold to 7000.

UNICOM
122.8 (CTAF) 

TDZE 1797



CATEGORY		A	B	C	D
LPV	DA	2047-1 250 (300-1)			
LNAV/ VNAV	DA	2219-1¼ 422 (500-1¼)			
LNAV	MDA	2200-1 403 (400-1)	2200-1⅞ 403 (400-1⅞)		
 CIRCLING		2300-1 497 (500-1)	2380-1½ 577 (600-1½)	2640-2¾ 837 (900-2¾)	