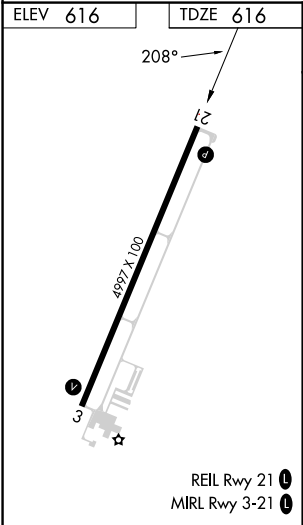
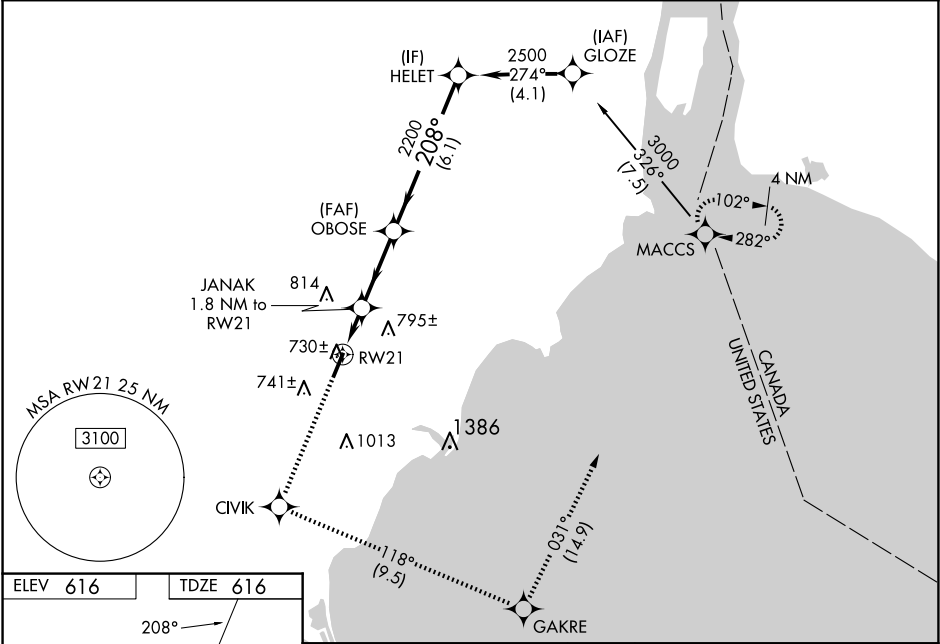


WAAS CH 86707 W21A	APP CRS 208°	Rwy Ldg TDZE 616 Apt Elev 616
--	------------------------	---

RNAV (GPS) RWY 21
CUSTER (TTF)

RNP APCH - GPS. <div>For uncompensated Baro-VNAV systems, LNAV/VNAV NA below -16°C or above 47°C. When local altimeter setting not received, use Detroit Metro Wayne County altimeter setting: increase LPV DA to 1011 feet; increase LNAV/VNAV DA 1054 feet; increase all MDAs 60 feet and visibility LNAV Cat C and Circling Cat C/D ¼ SM. Baro-VNAV and VDP NA when using Detroit Metro Wayne County altimeter setting. Circling to Rwy 3 NA at night.</div>			MISSED APPROACH: Climb to 3000 direct CIVIK and on track 118° to GAKRE and on track 031° to MACCS and hold.
AWOS-3 119.075	DETROIT APP CON 134.3 363.2	UNICOM 122.7 (CTAF)	



3000 ↑ CIVIK	tr 118° ✱	GAKRE ✱	tr 031° ✱	MACCS ✱	VGSI and RNAV glidepath not coincident (VGSI Angle 3.50/TCH 49).	HELET	
* LNAV only.							
RW21 0.9 NM		JANAK 1.8 NM to RW21 *1220		2200	208°	2500	
0.9 NM		3 NM		6.1 NM	GP 3.00° TCH 42		
CATEGORY A		B		C	D		
LPV DA	966-1¼ 350 (400-1¼)						
LNAV/VNAV DA	1009-1½ 393 (400-1½)						
LNAV MDA	980-1 364 (400-1)					980-1¼ 364 (400-1¼)	
CIRCLING	1120-1 504 (600-1)	1180-1 564 (600-1)	1380-2¼ 764 (800-2¼)	1380-2½ 764 (800-2½)			