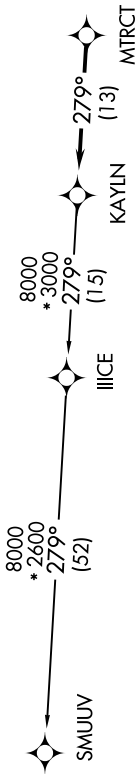


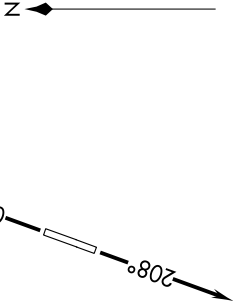
TOP ALTITUDE:  
ASSIGNED AT ATC

RNAV-1 DME/DME/IRU or GPS.  
RADAR required.

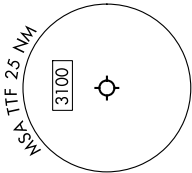
DETROIT DEP CON  
134.3 284.0  
AWOS-3  
119.075  
CTAF  
122.7



TAKEOFF MINIMUMS:  
Rwy 3, 21: Standard.



NOTE: Turbojet departures at/above 10000,  
maintain 280K until advised by ATC.



NOTE: Chart not to scale.

DEPARTURE ROUTE DESCRIPTION

TAKEOFF RUNWAY 3: Climb on heading 027° or as assigned by ATC, thence....  
TAKEOFF RUNWAY 21: Climb on heading 208° or as assigned by ATC, thence....

....for RADAR vectors to MTRCT, then on track 279° to KAYLN, then on (transition). Maintain ATC assigned altitude, expect filed altitude 10 minutes after departure.

SMUUV TRANSITION (KAYLN3.SMUUV):