

DETROIT DEP CON
134.3 284.0
AWOS-3
119.075
CTAF
122.7

RNAV-1 DME/DME/IRU or GPS.
RADAR required.

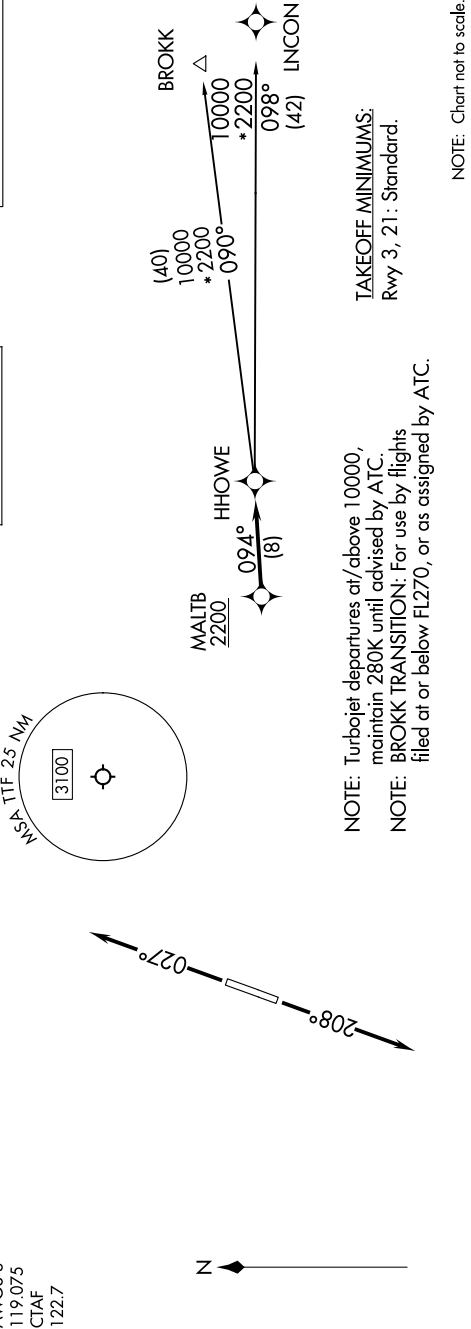
TOP ALTITUDE:
ASSIGNED BY ATC

HHOWE FOUR DEPARTURE (RNAV) AL-5642 (FAA)

CUSTER (TTF)
MONROE, MICHIGAN

HHOWE FOUR DEPARTURE (RNAV)
(HHOWE4.HHOWE) 16MAY24

MONROE, MICHIGAN
CUSTER (TTF)



DEPARTURE ROUTE DESCRIPTION

TAKEOFF RUNWAY 3: Climb on heading 027° or as assigned by ATC, thence....
TAKEOFF RUNWAY 21: Climb on heading 208° or as assigned by ATC, thence....
....for RADAR vectors to cross MALTB at or above 2200, then on track 094° to HHOWE, then on (transition).
Maintain ATC assigned altitude, expect filed altitude 10 minutes after departure.
BROKK TRANSITION (HHOWE4.BROKK):
LINCON TRANSITION (HHOWE4.LINCON):