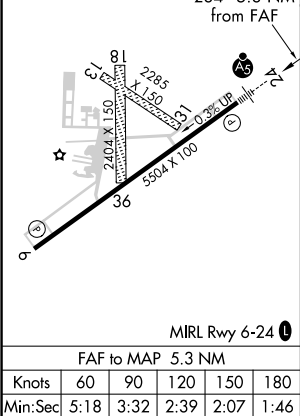
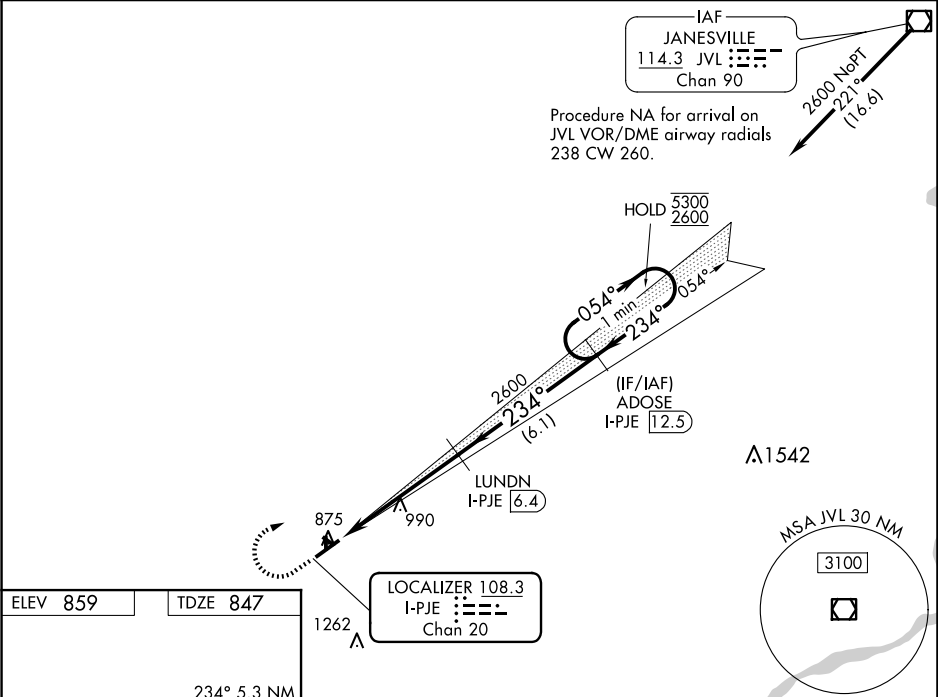


LOC/DME I-PJE <b>108.3</b> Chan <b>20</b>	APP CRS <b>234°</b>	Rwy Idg TDZE Apt Elev	<b>5504</b> <b>847</b> <b>859</b>
---	------------------------	-----------------------------	---

ILS or LOC RWY 24

ALBERTUS(FEP)

DME required.		<div>MALSR</div> <div></div>	MISSED APPROACH: Climb to 1400 then climbing right turn to 2600 on JVL VOR/ DME R-221 to ADOSE/ I-PJE 12.5 DME and hold.
<div><div><div>V</div><div>NA</div></div></div> <div>VDP NA when using Chicago/Rockford altimeter setting. Circling NA to Rwy's 13, 18, 31, 36. For inop ALS when using Chicago/Rockford altimeter setting, increase S-ILS 24 all Cats visibility to ¾ SM. When local altimeter setting not received, use Chicago/Rockford altimeter setting: increase all DA to 1114 feet; increase all MDA 80 feet and S-LOC 24 Cat C/D visibility ¼ SM and Circling Cat C/D ¼ SM.</div>			
AWOS-3 120.525	ROCKFORD APP CON 126.0 327.0	CINC DEL 121.85	UNICOM 122.8 (CTAF) 0



EC-3, 07 AUG 2025 to 04 SEP 2025

EC-3, 07 AUG 2025 to 04 SEP 2025