

VOR/DME MML
111.0
Chan **47**

APP CRS
130°

Rwy Idg
TDZE **1183**
Apt Elev **1183**

VOR RWY 12
SOUTHWEST MINNESOTA RGNL MARSHALL/RYAN FLD (MML)

⚠

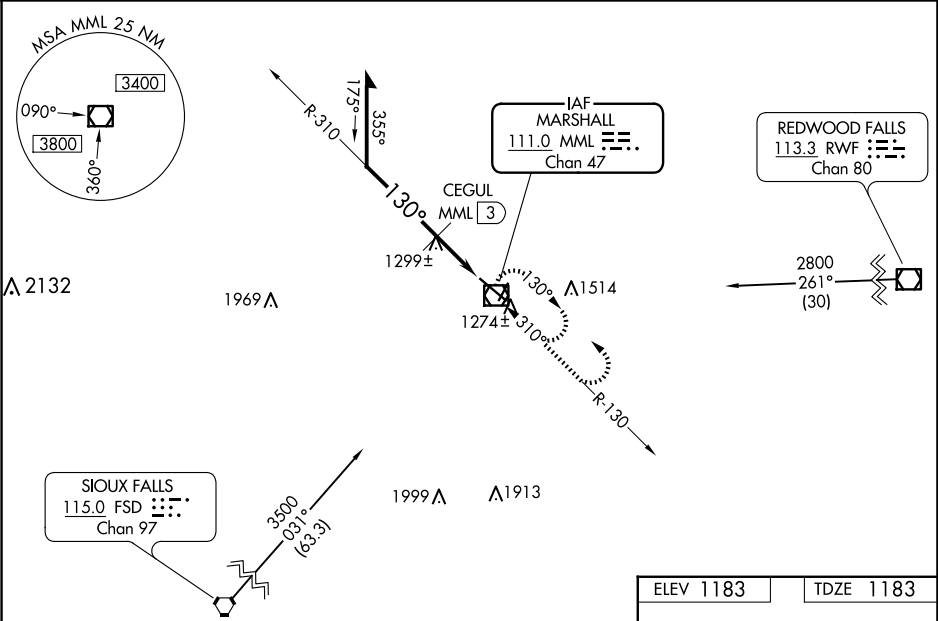
NA

For inop ALS, increase S-12 Cat C/D visibilities to 1½ SM, CEGUL fix minimums: S-12 Cat C/D visibility to 1 SM. For inop ALS when using Tracy altimeter setting increase S-12 Cat C/D visibilities to 1¾ SM. When local altimeter setting not received, use Tracy Muni altimeter setting and increase all MDAs 60 feet, S-12 Cat C/D visibility ½; Circling Cat C/D visibility ¾ SM; CEGUL fix minimums: increase Circling C/D visibility ¼ SM. VDP NA when using Tracy Muni altimeter setting.

MALSR

MISSED APPROACH: Climb to 2000, then climbing left turn to 2800 direct MML VOR/DME and hold.

AWOS-3PT 120.150	MINNEAPOLIS CENTER 127.1 290.2	GCO 121.725	UNICOM 122.8 (CTAF)
----------------------------	--	-----------------------	-------------------------------



ELEV 1183		TDZE 1183	
Remain within 10 NM		VOR/DME 6000	
2800		1760	
CEGUL MML 3		MML 1.9	
1.1 NM		1.1 NM	
CATEGORY	A	B	D
S-12	1760-½	577 (600-½)	1760-1¼ 577 (600-1¼)
CIRCLING	1760-1	577 (600-1)	1820-1¾ 637 (700-1¾) 1840-2 657 (700-2)
CEGUL FIX MINIMUMS			
S-12	1560-½	377 (400-½)	1560-¾ 377 (400-¾)
CIRCLING	1640-1	457 (500-1)	1820-1¾ 637 (700-1¾) 1840-2 657 (700-2)

HIRL Rwy 12-30

REIL Rws 2 and 20

MIRL Rwy 2-20