

# RNAV (GPS) RWY 12

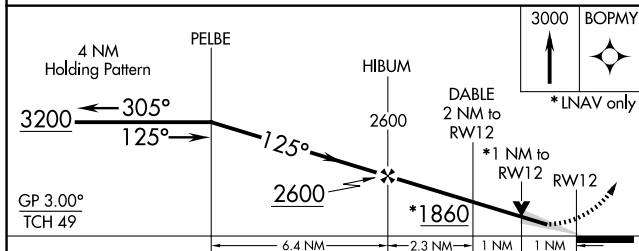
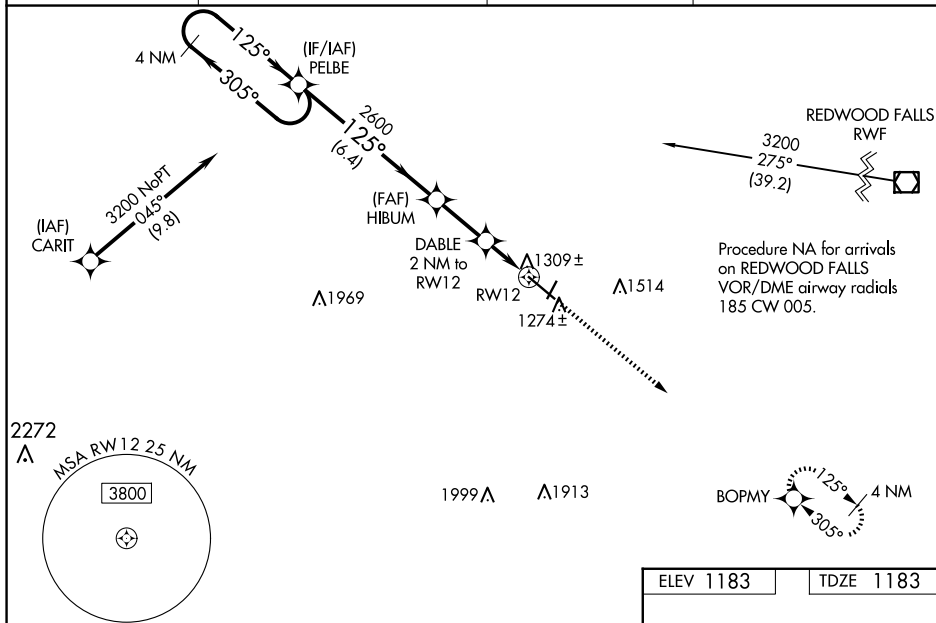
## SOUTHWEST MINNESOTA RGNL MARSHALL/RYAN FLD (MML)

**T** Baro-VNAV and VDP NA when using Tracy Muni altimeter setting. For uncompensated Baro-VNAV systems, LNAV/VNAV NA below -17°C or above 35°C. When local altimeter setting not received, use Tracy Muni altimeter setting and increase LPV DA to 1441 feet; LNAV/VNAV DA to 1548 and all Cats visibilities  $\frac{1}{2}$  SM; increase all MDA 60 feet, LNAV visibility Cat C/D  $\frac{1}{2}$  SM and Circling visibility Cat C/D  $\frac{1}{4}$  SM. For inop ALS, increase LNAV/VNAV all Cats visibility to  $\frac{1}{2}$  SM, and LNAV Cat C/D visibility to 1 SM. For inop ALS when using Tracy Muni altimeter setting, increase LNAV/VNAV all Cats visibility to 1 SM.



**MISSED APPROACH:**  
Climb to 3000 direct  
BOPMY and hold.

UNICOM  
122.8 (CTAF) 



CATEGORY	A	B	C	D
LPV DA	1383- $\frac{1}{2}$ 200 (200- $\frac{1}{2}$ )			
LNAV/VNAV DA	1490- $\frac{1}{2}$ 307 (400- $\frac{1}{2}$ )			
LNAV MDA	1560- $\frac{1}{2}$ 377 (400- $\frac{1}{2}$ )		1560- $\frac{5}{8}$ 377 (400- $\frac{5}{8}$ )	
CIRCLING	1640-1 457 (500-1)		1820-1 $\frac{3}{4}$ 637 (700-1 $\frac{3}{4}$ )	1840-2 657 (700-2)

