

LOC I-GBY	APP CRS	Rwy Idg	7221
109.7	125°	TDZE	1183
		Apt Elev	1183

ILS or LOC RWY 12

SOUTHWEST MINNESOTA RGNL MARSHALL/RYAN FLD (MML)

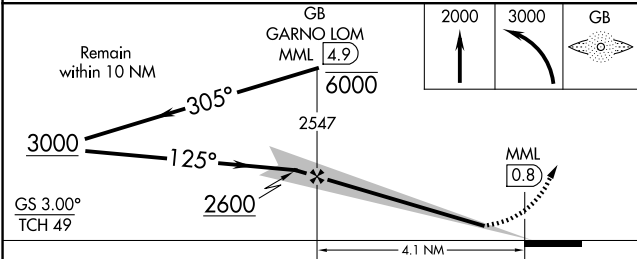
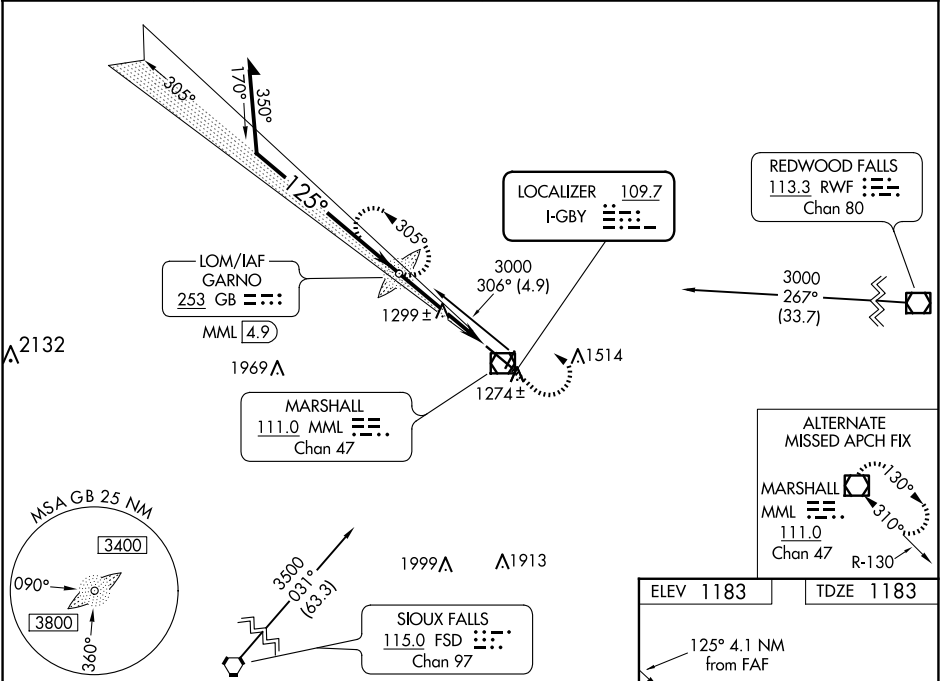
ADF or DME required.

When local altimeter setting not received, use Tracy Muni altimeter setting and increase ILS DA to 1441 feet and all MDA 60 feet, S-LOC Cat C/D visibility 1/8 SM and Circling visibility Cat C/D 1/4 SM. Inop table does not apply. For inop ALS increase S-LOC 12 all Cats visibility to 1 SM. Inop table does not apply when using Tracy Muni altimeter setting. For inop ALS when using Tracy Muni altimeter setting, increase S-LOC 12 Cat A/B visibility to 1 SM.

MALSR

MISSED APPROACH: Climb to 2000 then climbing left turn to 3000 direct GARNO LOM/ MML 4.9 DME and hold.

AWOS-3PT	MINNEAPOLIS CENTER	GCO	UNICOM
120.150	127.1 290.2	121.725	122.8 (CTAF) 0



ELEV 1183 TDZE 1183

125° 4.1 NM from FAF

Diagram showing the 7221 X 100 runway, 3000 X 75 runway, and 3000 X 30 runway. A 2000 125° glideslope is also shown.

HIRL Rwy 12-30	1
REIL Rwy 2 and 20	1
MIRL Rwy 2-20	1
FAF to MAP 4.1 NM	
Knots	60 90 120 150 180
Min:Sec	4:06 2:44 2:03 1:38 1:22