

APP CRS  
**096°**

Rwy Idg  
TDZE  
Apt Elev  
**N/A**  
**N/A**  
**296**

RNP APCH+GPS.

▼

▲

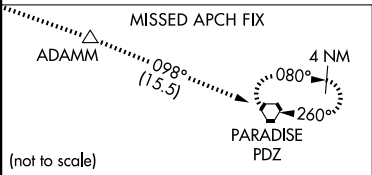
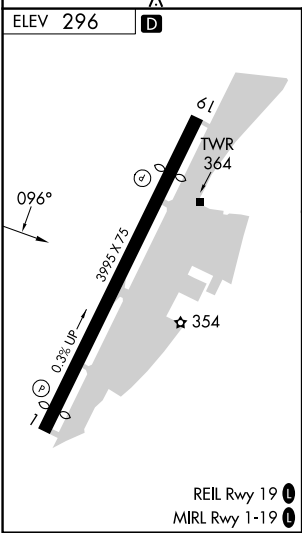
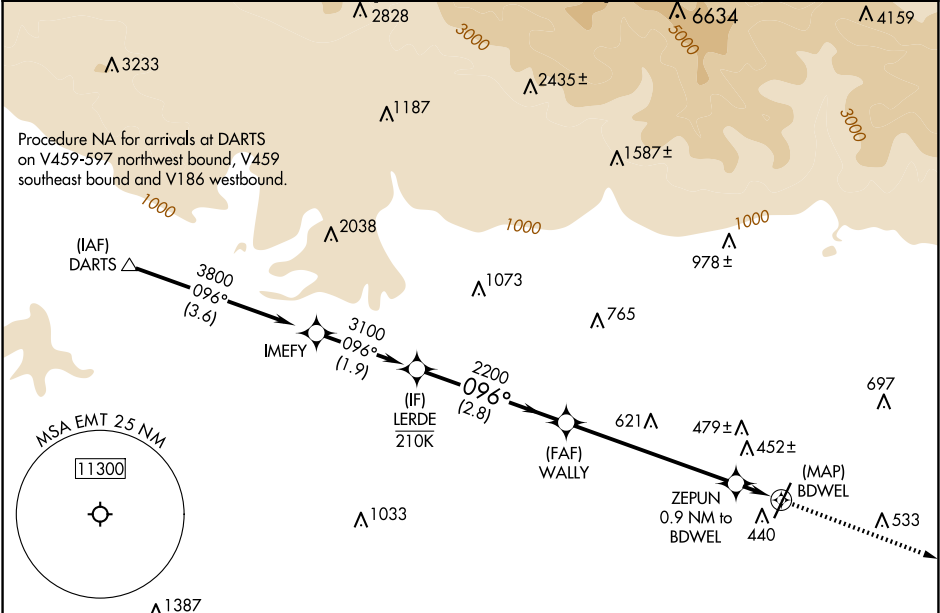
Circling Rwy 1 NA at night. Rwy 1, 19 helicopter visibility reduction below 1 SM NA.

MISSED APPROACH: Climb to 4000 direct ADAMM and on track 098° to PDZ VORTAC and hold.

RNAV (GPS)-B

SAN GABRIEL VALLEY (EMT)

ATIS <b>118.75</b>	SOCAL APP CON <b>125.5 349.0</b>	EL MONTE TOWER * <b>121.2 (CTAF)</b> <b>0</b>	GND CON <b>125.9</b>	UNICOM <b>122.95</b>
-----------------------	-------------------------------------	--	-------------------------	-------------------------



LERDE	WALLY	ZEPUN 0.9 NM to BDWEL	BDWEL
3100	2200	1120	
2.8 NM		3.2 NM	
4000		ADAMM	PDZ
↑		tr 098°	
CATEGORY			
A	B	C	D
820-1	960-1	1140-2½	1300-3
524 (600-1)	664 (700-1)	844 (900-2½)	1004 (1100-3)
CIRCLING			