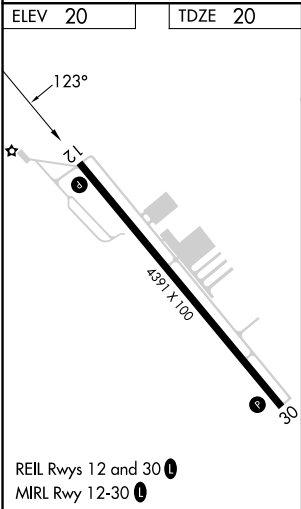
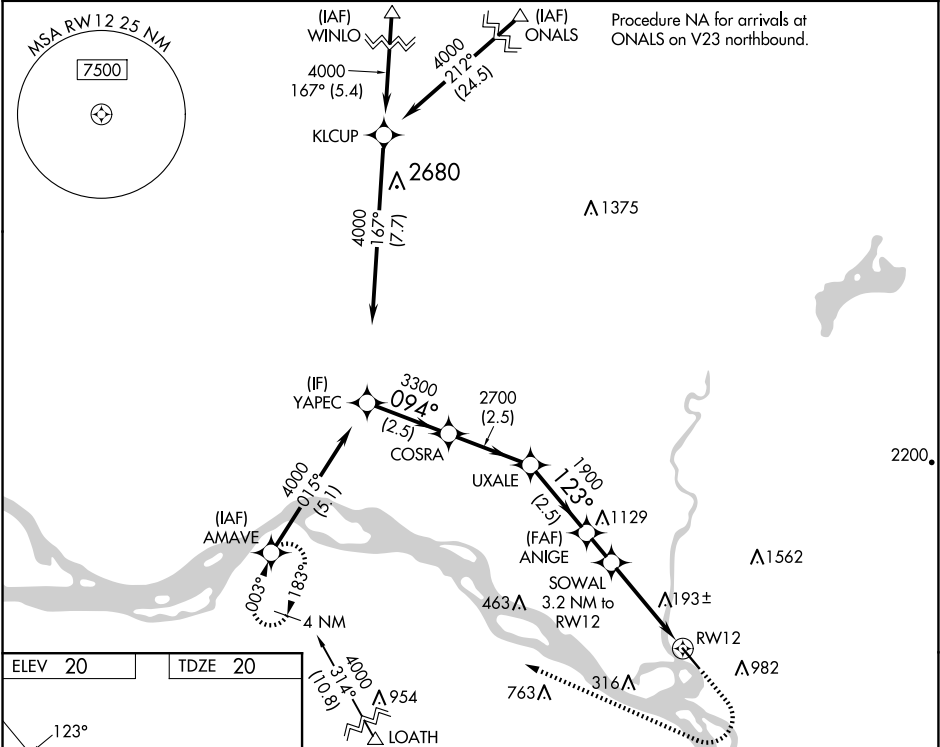


WAAS CH <b>65743</b> <b>W12A</b>	APP CRS <b>123°</b>	Rwy Idg TDZE Apt Elev	<b>4391</b> <b>20</b> <b>20</b>
--	------------------------	-----------------------------	---------------------------------------

RNAV (GPS) RWY 12  
SOUTHWEST WASHINGTON RGNL (KLS)

RNP APCH. ⚠ Circling NA northeast of Rwy 12-30. Circling Rwy 30 NA at night. Rwy 12 helicopter visibility reduction below ¾ SM NA. For uncompensated Baro-VNAV systems, LNAV/VNAV NA below -6°C or above 54°C.	MISSED APPROACH: Climb to 800 then climbing right turn to 4000 direct AMAVE and hold, continue climb-in-hold to 4000.
---	---

AWOS-3PT <b>135.075</b>	SEATTLE CENTER <b>124.2 317.6</b>	UNICOM <b>122.725 (CTAF) 0</b>
----------------------------	--------------------------------------	-----------------------------------



VGSi and RNAV glidepath not coincident (VGSi Angle 4.00/TCH 65).				800	4000	AMAVE
				↑	↗	✦
4000 094° 3300 2700 123° 1900 1420				*LNAV only		
GP 4.00° TCH 50				*2.1 NM to RW12		
2.5 NM 2.5 NM 2.5 NM 1 NM 1.1 2.1 NM				RW12		
CATEGORY	A		B	C	D	
LPV DA	608-1¾ 588 (600-1¾)			NA		
LNAV/ VNAV	766-2 746 (800-2)			NA		
LNAV MDA	980-1¼ 960 (1000-1¼)	980-1½ 960 (1000-1½)		NA		
<b>C</b> CIRCLING	980-1¼ 960 (1000-1¼)	980-1½ 960 (1000-1½)		NA		

NW-1, 07 AUG 2025 to 04 SEP 2025

NW-1, 07 AUG 2025 to 04 SEP 2025