

APP CRS  
**332°**

Rwy Ldg  
TDZE  
**1163**

Apt Elev  
**1165**

RNAV (GPS) RWY 33

BRIDGEWATER AIR PARK (VBW)

RNP APCH - GPS.

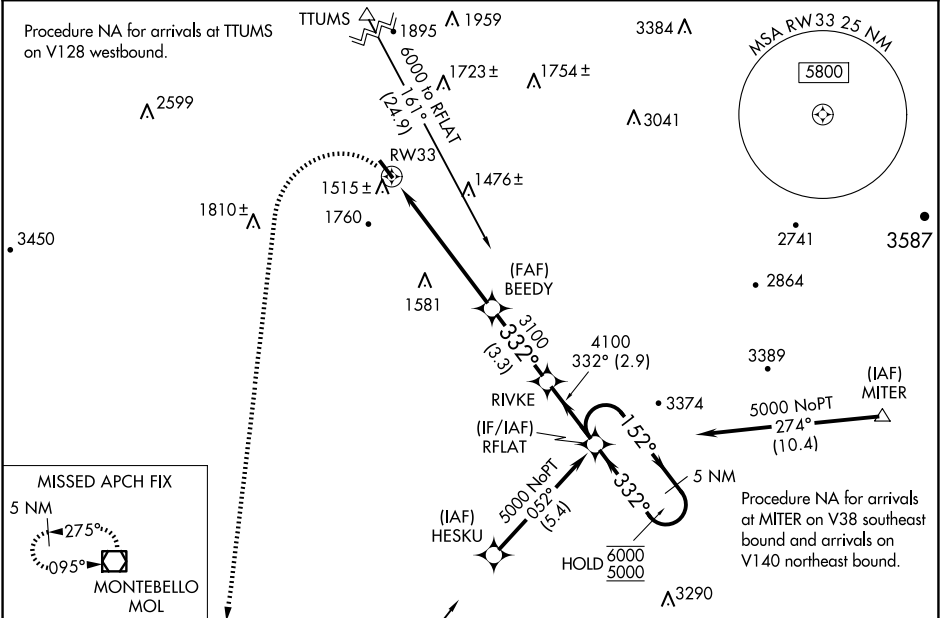
Procedure NA at night.  
Rwy 33 helicopter visibility reduction below 1 SM NA.

MISSED APPROACH: Climbing  
left turn to 6000 direct  
MOL VOR/DME and hold.

AWOS-3  
**119.55**

POTOMAC APP CON  
**132.85 323.125**

UNICOM  
**122.7 (CTAF)**



ELEV 1165

TDZE 1163

4034 X 60

33

332°

MIRL Rwy 15-33

6000

MOL

RW33

BEEDY

RIVKE

RFLAT

5 NM Holding Pattern

152°

332°

6000

5000

3100

4100

332°

6 NM

3.3 NM

2.9 NM

| CATEGORY | A                     | B                       | C  | D  |
|----------|-----------------------|-------------------------|----|----|
| LNAV MDA | 1780-1                | 617 (700-1)             | NA | NA |
| CIRCLING | 1860-1<br>695 (700-1) | 1940-1¼<br>775 (800-1¼) | NA | NA |