

WAAS CH 86704 W32A	APP CRS 318°	Rwy Idg 5201 TDZE 1372 Apt Elev 1396
--	------------------------	---

RNAV (GPS) RWY 32

DETROIT LAKES/WETHING FLD (DTL)

RNP APCH-GPS.

⚠

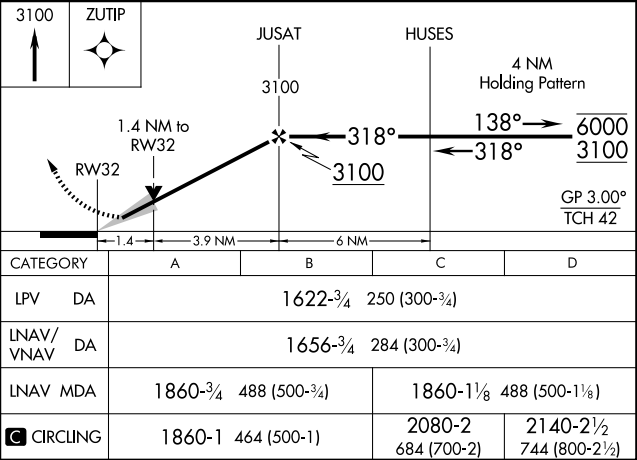
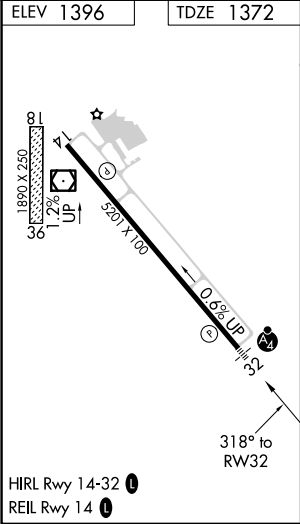
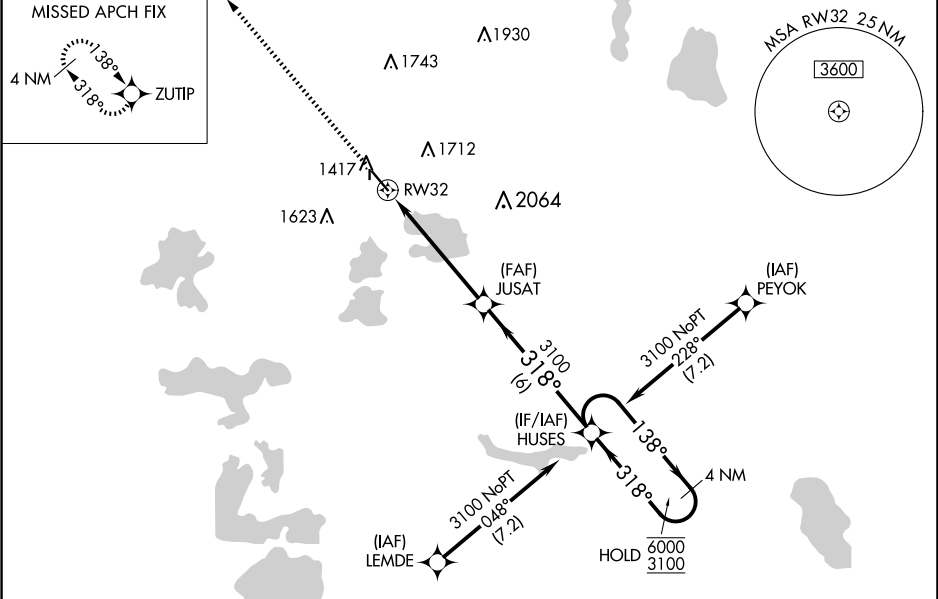
⚠

Circling NA to Rwy 18 and 36. Inop table does not apply to LPV.
For uncompensated Baro-VNAV systems, LNAV/VNAV NA below -17°C or above 54°C. For inop ALS, increase LNAV/VNAV all Cats visibility to ½ SM.

MALSF

MISSED APPROACH: Climb to 3100 direct ZUTIP and hold.

AWOS-3PT 119.075	MINNEAPOLIS CENTER 126.1 269.2	UNICOM 122.8 (CTAF)
----------------------------	--	-------------------------------



NC-1, 07 AUG 2025 to 04 SEP 2025

NC-1, 07 AUG 2025 to 04 SEP 2025